



Inventory List for Abilene Location



ABL-601
1. Turbine, Steam Generator

Mfr: Allis-Chalmers, Rated KW: 15,000, Initial Pressure: 600 PSIG, Capacity KW: 18,750, Initial Temperature: 825°F, Speed: 3,600 RPM, Exhaust Pressure: 2"HG-ABS, SN: 10490, with generator, alternating current, Mfr: Allis-Chalmers, KVA: 18,750 at 80% RF, Volts: 13,800, Amps Max: 785, Phase: 3, Cycles: 60, Temp. Rise - Stator 60°C, Rotor 85°C, Excitation - 250 Volts, 240 Amps, RPM: 3600, SN: 150471, with generator, direct current, Mfr: Allis-Chalmers, KW: 75, Volts: 250, RPM: 3,600, Amps: 300, Wound: Shunt, Type: ITC, Temp. Rise: 40°C winding at 55°C Comm., Exciter: 25 volts, 3.8 amps, SN: 152261



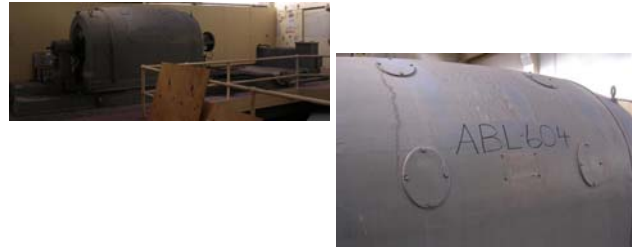
ABL-602
Steam Turbine

Maker: Elliott Co., Rating: 7,500 KW, Speed: 3,600 RPM, Press: 600 LBG, High Press.: 825°F, IN. H.G. ABS: 2, SN:12783, Generator has been removed



ABL-603
1. Turbine, Steam with Generator

Turbine identification tags have been removed. No information available at inventory, with generator, alternating current, Mfr: Westinghouse, KVA: 3750, Volts: 4150, Amperes: 521, %P.F.: 80, Phase: 3, Cycle: 60, RPM: 3,600, Exciter Amps: 210, Exciter Volts: 125, S.O. No.: 82D305, SN: 4573468



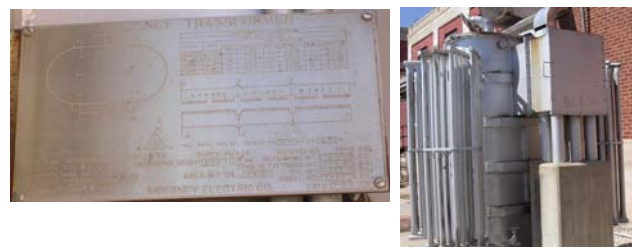
ABL-604
Generator

Maker: Westinghouse, A.C. Generator, No information tag, Turbine has been removed



ABL-605
1. Switchgear, Panel board

Double sided, consisting of: 16 sections/compartments-one side, 16 sections/compartments-one side, generator controls: generator 1, 2, 3, 4, mfr: General Electric, diaton regular, one side: with generator 1 - 2000 kw, 4160 V, generator 2 - 3000 kw, 4160 V, generatir 3 - 7500 kw, 13.8 kw, generator 4 - 15000 kw, 13.8 kw, with amps, volts, degree, kilovolt, megavars gauges, with switched and tattletale, with kilowatthour meter, GE, with relays, armmeter, temp meter switches, release control switches, one side: with General Electric High Speed Differential Relays, model: 121AC51B4R, 6 each relay panels per section, with generator trip with reset, with General Electric Percent Differential Relay, time overcurrent relays, with General Electric Fault Detectors, timing relays, reactance distance relays, with Basler Electric Solid State Protective Relays, with Westinghouse Distance Relays, with General Electric Distance Relays, with SEL-Schweitzer Eng Lab, SEL-351S, relay meter control faucet locator, (2) each, steel clad enclosure, indoor, high voltage, 7' 6" wide x 50' long x 8' high



ABL-606
Abilene Plant Unit 3 Unit Reserve Auxiliary Transformer (335)

Still in service as of 8-28-06, Moloney Transformer, Serial # 854927 Mfg. Date 4/28/48 Type SPL, 750 KVA continous, 55c rise, Three Phase, 60 cycle, High Voltage 4160 Low Voltage 480 % Impedance 5.5, Un-tanking Height 15 ft. 6 in., Gal M-2 oil is 460 gallons, Un-tanking weight 4400 lbs, Tank & fittings 3475 lbs, Oil weight 3450 lbs, Total weight 11325 lbs, Full wave impulse levels: HV 75 KV, LV 45 KV, Moloney Electric Co. St. Louis, MO, USA, Note: No PCB tag on transformer, checked with T&D and report says:PCB-PPM is 0 and the test date was 2/3/1986



ABL-607
Abilene Plant Unit 3 Reserve Auxiliary Transformer (334)

Out of Service and drained 3/25/2003, Moloney Transformer, Serial # 855772, 3 phase, 60 cycle, Mfg. Date 4/30/48, 750 KVA continuous, 55c rise, Type SPL, High Voltage 13200 Low Voltage 480, Un-tanking Height 15 ft. 6 in. Gallons M-2 oil 455 gal., Un-tanking weight 4600 lbs, Tank & fittings 3300 lbs, Oil Weight 3425 lbs, Total Weight 11325 lbs



ABL-608
Abilene Plant Unit 4 Reserve Auxiliary Transformer (434-1)

Still in service as of 8-28-06, Moloney Transformer Serial # 857849 Mfg. Date 5/19/48, 750 KVA continuous 55c rise 3 phase 60 cycle Type SPL, High Voltage 4160 Low Voltage 480 Gal M-2 Oil 460 gal., % Impedance 5.4, Un-tanking Height 15 ft. 6 in., Un-tanking Weight 4400 lbs., Tank & fittings 3350 lbs, Oil Weight 3450 lbs, Total Weight 11200 lbs, Note: There is not a PCB-PPM sticker on transformer. Checked with T&D and their records show last test date of 2/13/1986 and 0 PCB-PPM.



ABL-609
Abilene Plant Unit 4 Unit Auxiliary Transformer (434-2)
Out of service and drained 3/25/2003, Moloney Transformer Serial # 855771, Type SPL, 3 phase, 60 cycle, 750 KVA continuous 55c rise, High Voltage 13200, Low Voltage 480, % Impedance 5.45, Gal Oil 455 gallons, Mfg. Date 4/30/48, Un-tanking Height 15 ft. 6 in., Un-tanking weight 4600 lbs., Tank & fittings 3300 lbs., Oil weight 3425 lbs., Total weight 11325 lbs.



ABL-610
1. Crane, Trolley

25 Ton Capacity



ABL-611
1. Boiler, Integral, Furnace

Mfr: The Babcock-Wilcox Company, Capacity, LB Per Hour: 100,000, design pressure, lb:700, steam pressure, F.:845, built: 1947, boiler: Mfr: The Babcock and Wilcox Co., Contract No.: F-1237, Design Pressure, lb: 700, H.S. Square Ft: 6998, Built: 1947, Water Cooled Wall: Mfr: The Babcock and Wilcox Co., Contract No.: F-1237, Design Pressure, lb: 700, H.S. Square Ft: 1510, Built: 1947, Natl. BD: 15400 H.S.B., Superheater: Mfr: The Babcock and Wilcox Co., Contract No.: SH*8090, Built: 1947, Design Pressure: 700, NB: 15400



ABL-612
1. Boiler, Integral, Furnace

Mfr: The Babcock-Wilcox Company, Capacity, LB Per Hour: 100,000, design pressure, lb:700, steam pressure, F.:845, built: 1948, boiler: Mfr: The Babcock and Wilcox Co., Contract No.: F-1237, Design Pressure, lb: 700, H.S. Square Ft: 6998, Built: 1947, Water Cooled Wall: Mfr: The Babcock and Wilcox Co., Contract No.: F-1237, Design Pressure, lb: 700, H.S. Square Ft: 1510, Built: 1948, Natl. BD: 15400 H.S.B., Superheater: Mfr: The Babcock and Wilcox Co., Contract No.: SH*8090, Built: 1947, Design Pressure: 700, NB: 15400



ABL-613
1. Boiler, Integral, Furnace

Mfr: The Babcock-Wilcox Company, Capacity, LB Per Hour: 100,000, design pressure, lb:700, steam pressure, F.:845, built: 1948, boiler: Mfr: The Babcock and Wilcox Co., Contract No.: F-1237, Design Pressure, lb: 700, H.S. Square Ft: 6998, Built: 1948, Water Cooled Wall: Mfr: The Babcock and Wilcox Co., Contract No.: F-1237, Design Pressure, lb: 700, H.S. Square Ft: 1510, Built: 1947, Natl. BD: 15400 H.S.B., Superheater: Mfr: The Babcock and Wilcox Co., Contract No.: SH*8090, Built: 1947, Design Pressure: 700, NB: 15400



ABL-614
1. Boiler, Combination Control Panel

Consisting of: with furnace draft gauge, gas to air heater gauge, air from heater gauge, gas from air heater gauge, with superheater temperature gauge, % Co2 gauge, feedwater flow gauge, % loading gauge, meter max air flow meter, metermax furnace pressure meter, gas burner pressure gauge, steam drum-black gauge, micromhos per c.m. cube gauge, foxboro pressure recorder, metermax fuel feel meter, meter max master meter, with amps, position gauge, with circuit breaker controls, switches, steel enclosure, steel clad, indoor use



ABL-615

1. Boiler, Combination Control Panel

Consisting of: with furnace draft gauge, gas to air heater gauge, air from heater gauge, gas from air heater gauge, with superheater temperature gauge, % Co2 gauge, feedwater flow gauge, % loading gauge, meter max air flow meter, metermax furnace pressure meter, gas burner pressure gauge, steam drum-black gauge, micromhos per c.m. cube gauge, foxboro pressure recorder, metermax fuel feel meter, meter max master meter, with amps, position gauge, with circuit breaker controls, switches, steel enclosure, steel clad, indoor use



ABL-616

1. Boiler, Combination Control Panel

Consisting of: with furnace draft gauge, gas to air heater gauge, air from heater gauge, gas from air heater gauge, with superheater temperature gauge, % Co2 gauge, feedwater flow gauge, % loading gauge, meter max air flow meter, metermax furnace pressure meter, gas burner pressure gauge, steam drum-black gauge, micromhos per c.m. cube gauge, foxboro pressure recorder, metermax fuel feel meter, meter max master meter, with amps, position gauge, with circuit breaker controls, switches, steel enclosure, steel clad, indoor use



ABL-617

Tank, Storage (on roof)

Dimensions: 12' OD x 10' high vertical welded steel flat bottom, 1/4" bottom, 1/4" shell and deck, Capacity: 200 bbl, with clean plate 24" round, with ladder, with cold tar insulation overall



ABL-618

Tank, Storage (on roof)

Dimensions: 12' OD x 10' high vertical welded steel flat bottom, 1/4" bottom, 1/4" shell and deck, Capacity: 200 bbl, with clean plate 24" round, with ladder, with cold tar insulation overall



ABL-619

Tank, Storage (on roof)

Dimensions: 12' OD x 10' high vertical welded steel flat bottom, 1/4" bottom, 1/4" shell and deck, Capacity: 200 bbl, with clean plate 24" round, with ladder, with cold tar insulation overall



ABL-620

Heater with Superheater on Top

Mfr: Elliot Company, Dimensions: 6' OD x 15' Long horizontal welded steel, maximum working pressure: 30 PSI, maximum temperature: 450°F, year built: 1947, sn:12917A, HSB no.: 1489A, national board no.: 429, coded, certified and stamped with superheater on top, Mfr: Elliot Company, vertical welded steel, 48" OD x 4' high, max wp: 30 PSI, maximum temp 450°F, coded, stamped and certified, insulated - both, asbestos coated



ABL-621

Evaporator, G-R Bentube

Mfr: Griscom-Russell Co., size: 123-A-84, max working pressure pounds gauge, shell: 50, tubes and heads: 200



ABL-622

Evaporator

Dimensions: 8' OD x 12' long horizontal welded steel with superheater on top, dimensions: 6' OD x 3' high vertical welded steel, insulated overall, asbestos coating



ABL-623

Evaporator with Superheater

Mfr: Foster Wheeler Corp., Dimensions: 60' OD x 10' Long horizontal welded steel, Test Pressure: Shell: 100psi, tubes: 150psi, working pressure: shell: 50psi, tubes: 150psi, with evaporator on top, insulated, asbestos coated



ABL-624

1. Preheater, Evaporator

Dimensions: 24" OD x 5' high vertical welded steel, insulated, asbestos coating overall with sight glass



ABL-625

1. Exchanger, Heat

Service: feedwater heater, Mfr: The Griscum-Russell Company G-R Feedwater Heater, Type: SSU, Size: #25-115, Customer ID No.: W-735, Maximum Working Pressure: Shell 300psi at metal 650°F, Test Pressure: 600°F. Tubes: 900psi at metal 450°F, Test Pressure: 1800psi, Year: 1949, Item No.: 3, SN: 30700A

ABL-626

Heater-Feedwater

Mfr: Griscum-Russell Co., Type: SSU, Size: 29-115, Max Working Pressure: Shell: 150psi at metal 550°F, 300psi, Tubes: 922psi at metal 388°F, 1350psi



ABL-627

1. Heater, High Pressure Feedwater

Mfr: American Locomotive Corp. Alco Products Division, Type: C6-44-31-H, Maximum Pressure Shell: 100psi, Maximum Temp. Shell: 525°F, Size: 18-121, Maximum Pressure Tubes: 1000psi, Maximum Temp. Tubes: 225°F, SN: 21087, horizontal



ABL-628

Heater, High Pressure

Mfr: American Locomotive Corp. Alco Products Division, Type: C6-44-31-H, Maximum Pressure Shell: 275psi, Maximum Temp. Shell: 700°F, Size: 20-119, Maximum Pressure Tubes: 1000psi, Maximum temp. Tubes: 375°F, SN: 31028, horizontal



ABL-629

Fan With Motor

Turbovane Fan, Mfr: Sturttvant, Size: 995, Design: 2, SN: 512149, Motor, Mfr: Westinghouse, Type C S Induction Motor, Frame: 504-S, H.P.: 100, Volts: 440, Phase: 3, Cycle: 60, Amps per Terminal: 115, RRRPM at Full Load: 1780, constant speed, lock KVA code, Full Load: 100, Hours: 24, C Rise: 40, Style: 1441990, SN: 3S1N4915



ABL-630

Fan With Motor

Turbovane Fan, Mfr: Sturttvant, Size: 995, Design: 2, SN: 518158, Motor, Mfr: Westinghouse, Type C S Induction Motor, Frame: 504-S, H.P.: 100, Volts: 440, Phase: 3, Cycle: 60, Amps per Terminal: 115, RRRPM at Full Load: 1780, constant speed, lock KVA code, Full Load: 100, Hours: 24, C Rise: 40, Style: 1441990, SN: 153N8711



ABL-631
Fan With Motor

Turbovane Fan, Mfr: Sturtevant, Size: 995, Design: 2, SN: 518155, Motor, Mfr: Westinghouse, Type C S Induction Motor, Frame: 504-S, H.P.: 100, Volts: 440, Phase: 3, Cycle: 60, Amps per Terminal: 115, RRRPM at Full Load: 1780, constant speed, lock KVA code, Full Load: 100, Hours: 24, C Rise: 40, Style: 1441990, SN: 152N8358



ABL-632
Fan, Multivane

Mfr: Sturtevant, Size: 7 1/2, Design: 6, SN: 158158, with Motor, electric - Linestart, Mfr: Westinghouse, Type: CS Induction Motor, HP: 150, constant speed, Frame: 772-S, Phase: 3, Cycle: 60, Volta: 440, Amps Per Terminal: 174, % Load: 100, RPM: 1175, Hours: 24, Deg C Rise: 40, Code: H, Style No.: 2N-8359, SN: 1S-2N8359



ABL-633
Fan, Multivane

Mfr: Sturtevant, Size: 7 1/2, Design: 6, SN: 518157, with Motor, electric - Linestart, Mfr: Westinghouse, Type: CS Induction Motor, HP: 150, constant speed, Frame: 772-S, Phase: 3, Cycle: 60, Volta: 440, Amps Per Terminal: 174, % Load: 100, RPM: 1175, Hours: 24, Deg C Rise: 40, Code: H, Style No.: 3N-8712, SN: 1S-3N8712



ABL-634
Fan, Multivane

Mfr: Sturtevant, Size: 7 1/2, Design: 6, SN: not applicable tag removed, with Motor, electric - Linestart, Mfr: Westinghouse, Type: CS Induction Motor, HP: 150, constant speed, Frame: 772-S, Phase: 3, Cycle: 60, Volta: 440, Amps Per Terminal: 174, % Load: 100, RPM: 1175, Hours: 24, Deg C Rise: 40, Code: H, Style No.: 1N-3430, SN: 1S-1N3430



ABL-635
Pump and Motor Assembly

Service: Borler Feed Pumps, Mfr: Ingersol-Rand, Type: centrifugal pump, Size: 2 1/2RT-8, No, of Stages: 8, GPM: 249, Head Feet: 1860, RPM: 3575, Hydro Test: 1200psi, SN: 09483030 with motor, electric - Linestart, Mfr: Westinghouse, Type: CS Induction Motor, HP: 200, Frame: 607-S, Phase: 3, Cycle: 60, Volts: 440, Amps: 242.5, RPM: 3575, constant speed, Class: 1, Code: F, Style No.: 3N-8432, SN: 2S-3N8432



ABL-636
Pump and Motor Assembly

Service: Borler Feed Pumps, Mfr: Ingersol-Rand, Type: centrifugal pump, Size: 2 1/2RT-8, No, of Stages: 8, GPM: 249, Head Feet: 1860, RPM: 3575, Hydro Test: 1200psi, SN: 09483024 with Steam Turbine, Service: Boiler Feedwater, Mfr: The Terry Steam Turbine Company, HP: 182, RPM: 3550, Type: GS1, LBS Steam: 600psi, SN: 25125



ABL-637
Pump and Motor Assembly

Service: Borler Feed Pumps, Mfr: Ingersol-Rand, Type: centrifugal pump, Size: 2 1/2RT-8, No, of Stages: 8, GPM: 249, Head Feet: 1860, RPM: 3575, Hydro Test: 1200psi, SN: 09483028 with motor, electric - Linestart, Mfr: Westinghouse, Type: CS Induction Motor, HP: 200, Frame: 607-S, Phase: 3, Cycle: 60, Volts: 440, Amps: 242.5, RPM: 3575, constant speed, Class: 1, Code: F, Style No.: 3N-8432, SN: 1S-3N8432



ABL-638
Pump and Motor Assembly

Service: Borler Feed Pumps, Mfr: Ingersol-Rand, Type: centrifugal pump, Size: 2 1/2RT-8, No, of Stages: 8, GPM: 249, Head Feet: 1860, RPM: 3575, Hydro Test: 1200psi, SN: 01483171 with Steam Turbine, Service: Boiler Feedwater, Mfr: The Terry Steam Turbine Company, HP: 182, RPM: 3550, Type: GS1, LBS Steam: 600psi, SN: 24435



ABL-639
Pump and Motor Assembly

Service: Borler Feed Pumps, Mfr: Ingersol-Rand, Type: centrifugal pump, Size: 2 1/2RT-8, No. of Stages: 8, GPM: 249, Head Feet: 1860, RPM: 3575, Hydro Test: 1200psi, SN: 01483175 with motor, electric - Linestart, Mfr: Westinghouse, Type: CS Induction Motor, HP: 200, Frame: 607-S, Phase: 3, Cycle: 60, Volts: 440, Amps: 242.5, RPM: 3575, constant speed, Class: 1, Code: F, SN: Not Available, Tag Removed



ABL-640

1. Panel, Switchgear, Turbine and Generator Control

Consisting of: generator gas pressure gauge, centigrade gauge, alarm lights, hydrogen seal oil pump switch, Valves: to purity, instruments, pressure, switches, turbine throttle gauge, 12th stage extraction gauge, 20th stage retraction gauge, Esterline-Angus Recorder, amperes gauges, push bottom switches, steam flow to turbine gauge, reading x 1000 # water gauge, 25 stage extraction gauge, 30th stage extraction gauge, panalarm, condensate pressure recorder, steel enclosure, metal clad, 2 sections, indoor type



ABL-641

1. Panel, Switchgear, Turbine and Generator Control

Consisting of: generator gas pressure gauge, centigrade gauge, alarm lights, hydrogen seal oil pump switch, Valves: to purity, instruments, pressure, switches, turbine throttle gauge, 12th stage extraction gauge, 20th stage retraction gauge, Esterline-Angus Recorder, amperes gauges, push bottom switches, steam flow to turbine gauge, reading x 1000 # water gauge, 25 stage extraction gauge, 30th stage extraction gauge, panalarm, condensate pressure recorder, steel enclosure, metal clad, 2 sections, indoor type



ABL-642A

3. Pump and Motor Assembly

Consisting of: pump, centrifugal, Mfr: unknown no tags for id, Sixe: 6" x 4", with motor, electric, Mfr: Continental Electric Co, Inc, HP: 25, Type: N364, Volts: 220/440, Amps: 60/30, RPM: 1750, Phase: 3, Cycle: 60, 40°C rise, cont. duty, SN 574691



ABL-642B

3. Pump and Motor Assembly

Consisting of: pump, centrifugal, Mfr: unknown no tags for id, Sixe: 6" x 4", with motor, electric, Mfr: Continental Electric Co, Inc, HP: 25, Type: N364, Volts: 220/440, Amps: 60/30, RPM: 1750, Phase: 3, Cycle: 60, 40°C rise, cont. duty, SN 574691



ABL-642C

3. Pump and Motor Assembly

Consisting of: pump, centrifugal, Mfr: unknown no tags for id, Sixe: 6" x 4", with motor, electric, Mfr: Continental Electric Co, Inc, HP: 25, Type: N364, Volts: 220/440, Amps: 60/30, RPM: 1750, Phase: 3, Cycle: 60, 40°C rise, cont. duty, with Motor, electric, Mfr: General Electric, HP: 25, Volt: 220/440, Serv. Factor: 1.15, Cycle: 60, Type: K, Code: F, Frame: 364, Phase: 3, FL. Amps: 62.6/31.3, FL. Speed: 1760, Model No.: 5K1364AF1A, SN: WE6816386



ABL-643
Batteries

Mfr: Gould, Type: MCX340, 9 Plate Cell, 340 A.H. at 8 HR. Rate, Total: 60



ABL-644A
Heater

Lube Oil, Mfr: Griscum-Russell Co. G-R Oil Heater, Size: 10-6-84, Max Working Pressure, Steam: 375psi, Oil: 400psi, Serial No.: 23806A, 23807A, with pump-plunger, 2 1/2" x 1 1/2", motor, Westinghouse, HP: 10



ABL-645B
Heater

G-R Lube Oil, Mfr: Griscum-Russell Co., Size: 10-6-84, Max Working Pressure, Steam: 375psi, Oil: 400psi, Serial No.: 25652A, 25653A, with pump-plunger, 2 1/2" x 1 1/2", motor, Westinghouse, HP: 10



ABL-646

1. Switchgear, Panel - MCC Breaker Box

Consisting of: 4 sections with 14 breakers, Service: Boiler Room Motor Control Center - Motor Control Center No. 3, with breakers-Westinghouse Starter - De-Ion Line Starter, Class: 11200/M.2, Mech. Style: 1221395-C, Westinghouse, steel enclosure, steel clad, indoor type, high voltage, Mfr: Westinghouse, Date: 1948



ABL-647
1. Drum, Boiler

Mfr: American Boiler and Tank Co, Size: 36" OD x 5' high S/S vertical welded steel, maximum wp: 400psi, maximum temp: 650°F, ASME: 3567, Head: 1500", Shell: .875", Year Built: 1948



ABL-648
Switchgear Panel

Mfr: Westinghouse, Service: Boiler Room MCC 4-1, 2 sections with 7 breakers and starters, LineStarter - De-Ion - Size 1 with Westinghouse, steel clad, steel enclosure, high voltage, indoor type



ABL-649
Switchgear Panel

Mfr: Westinghouse, Service: Boiler Room MCC 4-2, 2 sections with 7 breakers and starters, LineStarter - De-Ion - Size 1 with Westinghouse, steel clad, steel enclosure, high voltage, indoor type



ABL-650

1. Compressor, Air

Service: Plant Air with compressor: Air, Mfr: Ingerson-Rand, Type: 30, Size: 5/5/3 1/2 x 4, Model No.:15TX, SN: 146638 with motor, electric <f>r: Westinghouse, HP: 15, Frame: 284-U, Phase: 3, Cycle: 60, Rise: 40°C, Volts: 220/440, Amps: 38/19, RPM: 1760, Type Design Incl.: ABDP, SN: 1778107, Service No.: 5507



ABL-651

1. Pump, Steam Jet Air

Mfr: Allis-Chalmers, Steam Pressure: 300 psi gauge, Steam Temperature: 800°F, SN: AP-637, horizontal welded steel bolted ends, 2 pass-top and bottom sections



ABL-652

Cooler, Lubricating Oil 2 pass

Mfr: Ross Heater Co., Size: 1314CP, SN: 78370-2, Mfr Date: 02/24/1949, SN: 78370-1 on 2nd pass



ABL-653
1. Compressor, Air

Service: plant air with compressor, air, Mfr: Ingersol-Rand, Type: 30T, Model: 15T, SN: 30T-594943 with motor, electric, Mfr: General Electric, HP: 15, Model: 5K326D191, Volts: 220/440, Code: F, Service Factor: 1.15, RPM: 1765



ABL-654
1. Compressor, Air

Service: Instrument Air, Mfr: Ingersol-Rand, Type: ES-1, Year: 1947, Compressor Cylinder: 9" Bore x 9" Stroke, Discharge Pressure: 100psi, RPM: 325, SN: 80998 with motor, electric, Mfr: Delco, HP: 40, Model: 13-696-A, Frame: 404, Phase: 3, Cycle: 60, at 60 cycle: 220/440 volt, Amps: 96/48, RPM: 1760, Service Factor: 1.15, Cont. C Rise: 40 Deg, SN: 454R



ABL-655
1. Tank, Air Receiver

Mfr: Richmond Engineering Co., Design: 125, Head Thick. Ins.: 3/8", Shell Thick. Ins. 5/16", HD Rating: 36, Length: 96, Diam.: 36, Max Work Temp.: 650



ABL-656
1. Tank, Air Receiver

Mfr: Buffalo Tank Corp, Size: 48" OD x 12' s/s long horizontal welded steel, Working Pressure: 125 psi, Working Temp.: 300°F, Natl. Board No.: 7741, S.t.: 34 HT: 40, H.R. 42948, H.S.B. No.: B183, coded, stamped and certified U69



ABL-657
1. Pump, Steam Jet Air

Mfr: Allis-Chalmers, Steam Pressure: 300 psi gauge, Steam Temperature: 800°F, SN: AP-585, horizontal welded steel bolted ends, 2 pans-top and bottom sections



ABL-658
Cooler, Lubricating Oil 2 pass

Mfr: Ross Heater Co., Size: 1314CP, SN: 78370-2, Mfr Date: 02/24/1949, SN: none available



ABL-659
1. Pump, Centrifugal

Mfr: Allis-Chalmers, Size: 16" x 14" Type: SE, GPM: 5100, Head Feet: 65, RPM: 1170, Impellar: A-15-FV, SN: not available tag removed with motor, electric, Type: ARW, Mfr: Allis-Chalmers, HP:125, Code: F, Phase: 3, Cycle: 60, RPM: 1170, Volts: 440, Amps: 154, HRS: 24, Ambient: 40, SN: 16827MK-626DSW-1-1



ABL-660
1. Pump, Centrifugal

Mfr: Allis-Chalmers, Size: 16" x 14" Type: SE, GPM: 5100, Head Feet: 65, RPM: 1170, Impellar: A-15-FV, SN: 48919 with motor, electric, Type: ARW, Mfr: Allis-Chalmers, HP:125, Code: F, Phase: 3, Cycle: 60, RPM: 1170, Volts: 440, Amps: 154, HRS: 24, Ambient: 40, SN: 16827MK-626DSW-1-2



ABL-661

1. Pump and Motor Assembly

Consisting of: pump, centrifugal, Allis-Chalmers, Model: 201-070-502, Size: 16" x 16", Type: SF, GPM: 9300, Head Feet: 55, RPM: 700, Impellar Dia.: 20.75 F Vane, SN: 49485, with motor, Mfr: Allis-Chalmers Motor, Type: ARW, HP: 200, Hours: 24, Phase: 3, Cycle: 60, RPM: 700, Volts: 440, Amps: 245, SN: 17051MK-630FSW-1-2



ABL-662

1. Pump and Motor Assembly

Consisting of: pump, centrifugal, Allis-Chalmers, Model: 201-070-502, Size: 16" x 16", Type: SF, GPM: 9300, Head Feet: 55, RPM: 700, Impellar Dia.: 20.75 F Vane, SN: 49486, with motor, Mfr: Allis-Chalmers Motor, Type: ARW, HP: 200, Hours: 24, Phase: 3, Cycle: 60, RPM: 700, Volts: 440, Amps: 245, SN: 17051MK-630FSW-1-1



ABL-663

1. Switchgear, Panel

480 Volt-PTS, Mfr: I.T.E Circuit Breaker Company Multumite Switchboard consisting of: 12 sections, 25 Breakers, ITE Circuit Breaker Company, Volts 250-DC, Amps 400, Type KB, 7/48 with undervoltage relays - Westinghouse steel enclosure, steel clad, indoor type, high voltage



ABL-664

1. Reactor, Current Limiting

Mfr: Murray - Metropolitan Device Corporation, Type: T2, Form: 42, Cycle: 60, Volt: 13,800, Amps: 8100, Temp Rise: 70°C, SN: 9222



ABL-665

1. Transformer

Type: ASL, Mfr: Westinghouse, Phase: 3, Class: AA, Class B Insul., KVA: 750, Volts: 4160 to 480, Impedance: 5.4%, L. Spec.: 516237, Full Load Continuously, 80°C Rise, Approx: Weights: Core and Coils: 5300Lbs, Total: 6300Lbs, Date of Mfr: 12/1950, SN: 5127122



ABL-666

1. Switchboard, Panelboard

Mfr: I.T.E Multumate Switchboard 480 Volt Throughout, Date of Mfr: 1947, Consisting of: 10 sections, 15 breakers - I.T.E Circuit Breaker Company, Volts: 250 DC, Amps: 400, Circuit Breaker Type: KB, Date of Mfr: 10/1947 with Westinghouse Undervoltage Relays, with General Electric Relay



ABL-667

1. Reactor, Current Limiting

Mfr: Murray - Metropolitan Device Corporation, Type: T2, Form: 42, Cycle: 60, Volt: 13,800, Amps: 8100, Temp Rise: 70°C, SN: 9062



ABL-668

1. Cooling Tower

2 Fan Position on Top, Approx Dimensions: 25' wide x 50' long x 30' high, Fiberglass Exterior with 10' fans and motors