

Inventory List for Oak Creek Location



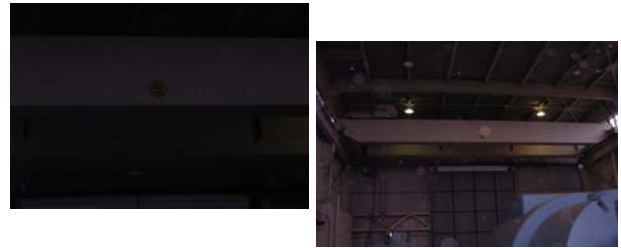
OAK-403



OAK-402



OAK-403



OAK-404

1. Crane, Traveling (Turbine Room)

Contract No.: T-1560, Mfr: Manning, Maxwell and Moore, inc., Type: "BRE-BRC" four motor overhead electric traveling crane, Capacity: Main Hoist: 50 tons, Auxiliary Hoist: 10 tons, Span Between Rails: 57'-0", Speed: Main Hoist: 6 FPM, lift 32'-9", Auxiliary Hoist: 25 FPM, lift 57'-0", Trolley: 85 FPM, Ridge: 100 FPM, Motors: Main Hoist: 30 HP, 1200 RPM, 440 V, Auxiliary Hoist: 20 HP, 1200 RPM, 440 V, Trolley: 7 1/2 HP, 900 RPM, 440 V, Ridge: 10 HP, 1200 RPM, 440 V, Type of Control: Pendant push button suspended from Richard-Wilcox track on bridge



OAK-405

1. Control Room, Turbine, Generator Unit

Generator and auxiliary control board, Mfr: Westinghouse Corp. with instruments, relays, control switches, recorders, annunciator, see pictures for details and layout



OAK-406

1. Control Cabinet, Hydrogen Control Generator Hydrogen Temperature
 Contract No.: T-1578, Mfr: Bailey Meter Co., Type: pneumatic, Description/Operation: control is of single element type with proportional and reset action adjusting flow of cooling water from generator hydrogen coolers to maintain and reset generator hydrogen cold gas outlet temperature, Enclosure: metal clad, high voltage, indoor use, dead front, horizontal drawout with door openings



OAK-407
1. Switchgear Panel, Breakers, 2 Sections

Mfr: Westinghouse, Service: S-1 panel and S-2 panel, Rating: 132 VDC - S-1 Panel, Rating: 208/120 VAC - S-2 panel, S-1 Panel: with battery ACB main breaker with 7 breakers, 2300 V switchgear, 2300 V ACB cabinet/test cabinet, 440 V switchgear generator control board, turbine - B/R gauge board, 138 KV line panels, with 7 breakers, with S-1 excitation cubicle breaker, with emergency bearing oil pump breaker, S-2 panel with breakers, Enclosure: metal clad, high voltage, indoor use, dead front, horizontal drawout with door openings



OAK-408
1. Transformer

Mfr: ABB Power T and D Company Inc., Uema class AA dry type transformer, KVA: 5000/6250, HV: 13800 V/7967, KV BIL: 60 HV/20 LV, LV: 2400, LV AMP: 1203/1504, Class: AA/FA, Type: vent, Phase: 3, Impedance: 4.73%, Hertz: 60, Temp Rise: 70°C, Conductor: c/c, Approx Weight: Core and Coils: 27,300 Lbs, Total: 29,400 Lbs, Instr. Book: IBXF1-00, Steel clad enclosure with electronic temperature monitor, Mfr: Qualitrol, SN: 24-35133-01 with 15 breakers/panel cabinets, Mfr: I-T-E Circuit Breaker Company, Type: 5HK-150, Rated KV: 4.16, Rated Frequency: 60, Continuous Current: 1200, Interrupting MVA: 150, Max Interrupting Current: 25000, Max Design Voltage: 4.76 volts, Min Operating Voltage: 3.5, Impulse Withstand KV: 60, Cycle: 60 with stand KV 19, Closing Voltage: 125-DC, Trip Voltage: 125-DC, Date: 03/06/2001, with General Electric Overcurrent Relays, Model: 121AC53A1A, Type: 1AC, 4-16 amperes, Cycle: 60, 3 each / breaker cabinet, with 1 section-potential transformer BUS and Line with phase A,B,C voltmeters with voltage relays: GE metal clad enclosure, high voltage



OAK-409
1. Transformer/Panel

Mfr: MGM Transformer Company, KVA: 750, Phase: 3, Hertz: 60, Type: HT, Voltage: 2400-480Y/277Bil, 20 KV-HV, 10 KV-LV, Insul. System: 220-HV, °C Rise: 80, Cooling Class: AA, Catalog No.: AC374-V0132-B, Impedance: 4.4% at 100°C, C and C Weight: 4000Lbs approx, SN: 91-3-37876, steel clad enclosure separate compartment, with 5 section switchgear panel consisting of: 16 breakers, Mfr: I-T-E Circuit Breaker, Type: K-225, Frame Size: 225 AMP, Voltage: 600, A-C 250 D-C, Interrupting Rating class 15000 IC calibration-refer to trip unit, Note: I-T-E Transformer has been removed, steel clad enclosure only



OAK-410
1. Evaporator and Preheater

Contract No. / Customer ID.: T-1586, Mfr: Griscom-Russell Company, Type: No. 144-A-168, Type: J-2, horizontal "Bentube" single effect evaporator with external contact deaerating preheater integrally mounted on evaporator shell, Reted Capacity: 15500 Lb/Hr, Operating Pressure Range: 5-50PSIG, Shell Design Pressure: 75PSIG, Dimensions: 61"OD x 19'8" Long horizontal welded steel, Tag Data: Type J-2, Shell: 30VAC at 75PSi, Tubes: 250PSi at 775°F, Metal: Shell 350°F at 150PSi, Tubes 650°F at 375PSi, SN: 19955A-1



OAK-411
1. Heater, Deaerating

Contract: T-1555, Mfr: Graver Water Conditioning Co., Number and Type: one vertical, cylindrical, direct contact, tra type heating section with internal direct contact spray type vent condenser, and horizontal cylindrical water storage section, Rated capacity: 535000Lb/Hr, Oxygen Guarantee: 0.005cc/liter at 535000Lb/Hr, 0.005cc/liter expected at 600000Lb/Hr, Storage Section Capacity: 10000 gallon below normal operating level, Operating Pressure Range: 5-50Psig, Shell Design Pressure: Full vacuum to 75Psig, Dimensions: Deaerating Section: 9'Dia x 5' straight shell length, Storage Section: 10'Dia x 19' straight shell length, Tag Data: Mfr: Allied Steel Products - Graver Water Conditioning Co., Max Working Pressure: 75Psi at 650°F, Max Temp: 650°F at 75Psi, Built: 1960, NB No.: 3232, SN: K 60163, coded stamped and certified



OAK-412
1. Fan, Forced Draft

Contract: T-1557, Mfr: Westinghouse Electric Corp, Number and type: 1 #4054 DWDI heavy-duty airfoil fan class 1800 with 3/16" housing, constant speed, forced draft fan with variable inlet vanes, Wheel: airfoil type with 10 blades, Bearings: heavy-duty, self-aligning, ringoiled, water cooled, babbitted bearings, mounted on independent pedestals with sole plates, Motor: 1000 Hp, 1800 Rpm, 2300 Volts, Westinghouse weather protected type: Performance Data: Normal Full Load: Boiler Output: 525000 Lb steam/Hr, Temperature ofAir: 100°F, FD Fan Capacity: 177000 Cfm, Fan Static Discharge Pressure: 20.9"H2O, Fan Speed (Nominal): 1785 Rpm, Bhp Required at Coupling: 780, Design Capacity: Boiler Output: max, Temperature ofAir: 100°F, FD Fan Capacity: 200000 Cfm, Fan Static Discharge Pressure: 25.0"H2O, Fan Speed (Nominal): 1785 Rpm, Bhp Required at Coupling: 1040, Fan Style No.: 1E-4001-1, with motor, electric, Mfr: Westinghouse, HP: 1300, RPM: 1778, Frame: W3A, Phase: 3, Hertz: 60, Volts: 2300, Amps: 275, Temp Method: Termal, SN: 1863P669



OAK-413



OAK-414

1. Heater, Air

Number and Type: One Ljungstrom regenerative air heater, Mfr: Air Preheater Corp, Size and Arrangement: VX54 - 23 1/2 vertical shaft inverted with oil lubrication for support bearing, Height of Elements: Hot End Layer: 42", Cold End Layer: 12", Rotor Motor: 7 1/2 Hp, 1800 Rpm, 440 volt totally enclosed, fan cooled type, Bearing Oil Pump Motor: 3/4 Hp, 870 Rpm, 440 volt totally enclosed, fan cooled type, Installed: 1961, Heater No.: 3434, with Gear Reducer, Mfr: Faulk

1. Drum, Steam

Mfr: Babcock and Wilcox Company, Overall Length: 33' 0", Inside Diameter: 60" nominal, Thickness: 4 - 1/4", Type: radiant, Tube Size: 2 - 31/32" OD, Supply and Riser Tubes: 4 - 1/2" OD, Headers: (all) 14" OD and 18 - 1/4" OD, Valves: 2 - 2 1/2" lower water wall and side wall header drains, 2 - 1 1/2" lower front and rear header drains, Working Pressure: 1725psi, Test Pressure: 2588psi, BLR H.S.: 5208psi, Water Wall H.S.: 528psi, Natl. Board No.: 20290 HSB, Built: 1960, Weight: 137100lbs



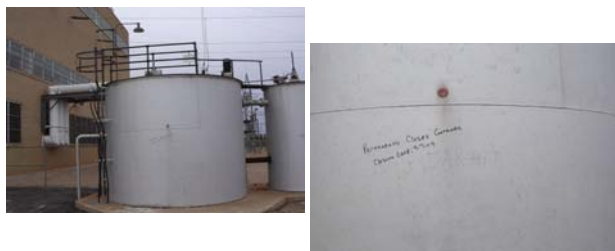
OAK-415
Tank, Gland Water

Size: 2000 Gallon horizontal welded steel cylindrical, Approx. Dimensions: 14'-0" long (straight length) x 5'0" diameter, Plate: 3/8" shell and heads ASTM A-283 Grade B, No tag for identification



OAK-416

1. Monitoring System, Continuous Emissions Monitoring System
Mfr: Columbia Scientific Industries with Sample Monitoring Control, Mfr: CSI, Model: SD 35-1A with CSI Digital Readout Board, Mfr: CSI, Model: SPLC 3260 with Protocol Interface Node Module Odessa Engineering, Model: SPLC Networks with Chemiluminescence No-X Analyzer, Mfr: Thermo Environmental Instruments Inc, Model: 42D with Infrared Gas Analyzer, Mfr: CSI, Model: 3300A with purge Air with sample flow with CO2 Analyzer-% fuel scale with building 8' x 8' x 8' high steel frame insulated flat roof flat floor-linoleum with A/C window



OAK-417
1. Tank, Storage

Dia: 12'OD x 11'6" high vertical welded steel, 1/4" btm, 3/16" shell and deck flat btm 2 seam with stairway all connect



OAK-418
1. Tank, Storage

Dia: 6'OD x 11'6" high vertical welded steel, 1/4" flat btm, 3/16" shell and deck with stairway seam



OAK-419
1. Transformer, Power Transformer

Mfr: Allis-Chalmers, Phase: 3, Cycle: 60, Rise: 55°C, Class: OA, H Wind: KVA 7500 OA, 138000 volts, 550 bil, X Winding: KVA 7500 OA, 2400 volts, 75 bil, Impedance: at 7800 KVA: 8.0%, Weights: Untank: 31765lbs 289", Oil: 4514gal 33830lbs, Tank and Flags: 24205lbs, Total Weight: 89800lbs, Date Mfr: 05/1961, SN: 2-6311-01598-1



OAK-420

Oak Creek Plant Main Power Transformer
Westinghouse 3 Phase Transformer, *97000 KVA, I 36000 GRD-Y, 60 Hertz, Impedance 11.0%, I Spec 689984, Class FOA, Full Load Continuously 55 deg C Rise, Gallons Oil 4230, Serial # 6990452, Instruction Book 47-621-C539, Approximate Weight In # core & coils 150000, (Core 35000 - Oil 32000 - Total 217000), Date of Mfg. 1961, Height of crane lift necessary to un-tank core & coils exclusive of slings is 333 inches, Approximate weight of parts to be lifted when un-tanking is 150000 lbs, PCB-PPM is 1, Test Date was 2-7-2000



OAK-421
1. Filter, Multimedia Pressure

Mfr: Industrial Service and Fabricators, Inc, 100psi at 100°F max allowed work pressure - 20°F at 100psi, external pressure Opsig at 0°F, year built 2001, SN: 01-4347, Natl Board #4034, Dimensions- 8'OD x 6' high vertical welded steel seam to seam, ellip. heads bottom and top with steel leg supports 2 1/2' high



OAK-422
1. Pressurized Vessel

Mfr: Rothschild, Size: 5'OD x 8' high seam to seam, Max D.P.: 300lbs at 650°F, Spot Mfr SN: 25201, Xray Insurance SN: 25201, Built: 1961 vertical welded steel on steel leg supports insulated



OAK-423
1. Tank, Distilled Water

Size: 60000 gallon vertical welded steel cylindrical, Approx. Dimensions: 23' - 9" high (straight length) x 21' - 3" Diameter, Plate: 1/2" Shell and Bottom, 3/8" Top, ASTM A-283 Grade C, 3 Ring, Flat Bottom, Flat Roof, with stairway and ladder, all connections



OAK-424
1. Tank, Treated Water

Size: 30000 Gallon vertical welded steel cylindrical, Approx. Dimensions: 18' - 0" high (straight length) x 17' Diameter, Plate: 1/2" Shell and Bottom, 3/8" Top, ASTM A-283 Grade C, 3Ring, Flat Bottom, Flat Roof, with stairway, ladder and all connections



OAK-425
1. Tank, No 4 Fuel Oil Storage

Capacity 2100000 gallons vertical welded steel, Tank No. 3, 5 ring, 40' high x 50' OD flat bottom, 1/4" throughout



OAK-426 A
1. Pump and Motor Assembly

Service: fuel oil discharge line to heater det, Pump: could not ID, insulated our toys at 1200000 gal tank, with motor, electric, Mfr: GE Tri Clad, HP: 100, Serv Fact: 1.0, Rating: cont, FL RPM: 1780, Volts: 230/460, Phase: 3, Cycle: 60, FL Amps: 240/120, Type: K, Model: 5K405BK205, Frame: 405T, Design: B, Code: G, Insul Class: B, Max Amb: 40°C, SN: FJ282038



OAK-426 B
1. Pump and Motor Assembly

Service: fuel oil discharge line to heater det, Pump: could not ID, insulated our toys at 1200000 gal tank, with motor, electric, Mfr: GE Tri Clad, HP: 100, Serv Fact: 1.0, Rating: cont, FL RPM: 1780, Volts: 230/460, Phase: 3, Cycle: 60, FL Amps: 240/120, Type: K, Model: 5K405BK205, Frame: 405T, Design: B, Code: G, Insul Class: B, Max Amb: 40°C, SN: FJ292053



OAK-427
1. Tank, Distilled Water Storage

Diameter: 30', Height: 30' high vertical welded steel, 1/4" flat bottom, 1/4" shell and deck



OAK-428
1. Tank, Fuel Oil Storage

Mfr: Rothschild Boiler and Tank Works, Capacity: 5000bbl vertical welded steel cylindrical, Dimensions: 35'-0" Diameter x 30'-0" straight shell height, Plate: 1/4" bottom, 3/16" shell and deck ASTM A-283 Grade C, flat bottom with ladder, stairway, all connections



OAK-429
1. Pump and Motor Assembly

Service: transfer pump, Pump: covered with insul, could not get to, with motor: GE Tri Clad, HP 40, Serv. Factor 1.0, Rating: cont., RPM: 1180, Volts: 230/460, Phase: 3, Cycle: 60, FI Amp: 99/49.5, Type: K, Frame: 3641, Design: B, Code: G, Model: 5K364BK305B1, Max Amb: 40°C, SN: FJ292027



OAK-430
1. Elevator, Boiler Access



OAK-431
1. Ejector, Air

Contract: T-1559, Mfr: Westinghouse Electric Corp, Number and Type: one passenger and freight elevator, Capacity: 2000lb, Operating Speed: 100fpm, Number of Stops: 6, Controller: Westinghouse rheostatic A-C single automatic with inching and automatic control, Platform Size: 3'-0" x 4'-10", Hoistway Entrance Size: 3'-0" x 7'-0" sliding doors with self-closers, door for door landings are weather stripped, Door Operation: collapsible gate type car door and swing type hoistway doors, Hoist Motor: 7-1/2hp, 1100rpm, 440 volt type

Number and Type: one 6th twin element, two stage, combined surface type, Miscellaneous Equipment: combined inter and after-condenser, inter-condenser trap, orifice-manometer type air meter and one set of steam pressure reducing equipment, Steam Consumption Per Element: 600lb/hr, Air-Vapor Mixture Capacity Per Element: 150lb/hr at 1.0"hg ABS suction pressure, Friction Drop Through Air Ejector Water Circuit: 4.0' H₂O at 950gpm, Mfr: Wrothington Corporation Steam Jet Ejector, Size: 6cth, Min Operating Steam Pressure: 200lb/gal, SN: 1588808



OAK-432

1, Heater, Low Pressure "A" Closed Feed-Water Heaters

Contract: T-1554, Mfr: American Radiator and Standard Sanitary Corp (Ross Heat Exchanger Division), Type: vertical, U Tube, 4 pass heater, Heating Surface: 1578sq/ft, Number and type of tubes: 606 (303 U's) 5/8" OD #18bwg admiralty, Performance Data: capacity: 368100lb/hr, Inlet Water Temperature: 101.5°F, Outlet Water Temperature: 158°F, Steam Pressure in Heater: 5.09psia, Steam to Heater: 19505lb/hr, Heat Content of Steam: 1165.5btu/lb, Drains to Heater: 21250lb/hr, Friction drop: 36.2' H2O, Terminal Difference: 5°F



OAK-433

1. Heater, Low Pressure

Type: vertical, u tube, 2 pass heater, Heating Surface: 1535sq/ft, Number and Type of Tubes: 550 (275 u's) 5/8" OD #18bwg admiralty, Performance Data: capacity: 408400lb/hr, Inlet Water temperature: 158.5°F, Outlet Water Temperature: 211.8°F, Steam Pressure in Heater: 16.1psia, Steam to Heater: 21250lb/hr, Heat Content of Steam: 1212.3btu/lb, Friction Drop: 7.35ft/H2O, terminal Difference: 5°F



OAK-434

1. Heater, High Pressure "D"

Type: vertical, u tube, 2 pass heater with integral drain subcooling and desuperheating sections, Heating Surface: Condensing Section: 1239sq/ft, Drain Subcooler Section: 423sq/ft, Desuperheating Section: 234sq/ft, Number and type of Tubes: 592 (296 u's) 5/8" OD #16bwg cupronickel (80-20), Performance Data: Capacity: 510700lb/hr, Inlet Water Temperature: 284.5°F, Outlet Water Temperature: 347.0°F, Steam Pressure in Heater: 138.2psia, Steam to Heater: 28000lb/hr, Heat Content in Steam: 1404.3btu/lb, Drains to Heater: 50000lb/hr, Friction Drop: 11.4ft/H2O, Terminal Difference: 5°F, Drain Subcooler Difference: 10°F, Mfr: American Radiator and Standard Sanitary Corporation (Ross Heat Exchanger Division), Surface: 1906sq/ft, Design Pressure: Tubes 2000psig, Shell 300psig, Hydro Test Pressure: Tubes 3000psig, Shell 450psig, Design Temperature: Tubes 455°F, Shell 650°F, Part No.: 167M2919-5A1, SN: C1-180198-02, Insulated vertical welded steel



OAK-435

1. Heater, High Pressure "E"

Type: Vertical, u tube, 2 pass heater with integral drain subcooling and desuperheating sections, Heating Surface: Condensing Section: 2603sq/ft, Drain Subcooler Section: 362sq/ft, Desuperheating Section: 486sq/ft, Number and Type of Tubes: 700 (350 u's) 5/8" OD #16bwg cupronickel (80-20), Performance Data: capacity: 510700lb/hr, Inlet water Temperature: 347.0°F, Outlet Water Temperature: 443.0°F, Steam Pressure in heater: 393.7psig, Steam to Heater: 50000lb/hr, Heat Content in Steam: 1359.9btu/lb, Friction Drop: 11.0ft/H2O, Terminal Difference: 0°F, Drain Subcooler Difference: 10°F, Mfr: American Radiator and Standard Sanitary Corporation (Ross Heat Exchanger Division), Surface: 2603sq/ft, Design Pressure: Tubes 2000psig, Shell 600psig, Hydro Test Pressure: Tubes 3000psig, Shell 900psig, Design Temperature: Tubes 525°F, Shell 650°F, vertical welded steel, insulated, Part No.: 167193122-2A1, SN: C1-18098-01



OAK-436

1. Tank, Waterbox Vacuum

Dimensions: 36" OD x 5'0" long, horizontal welded steel, no tag for ID



OAK-437

1. Switchgear, No. 1A Motor Control center, Panel Breaker Board, MCC
Mfr: Westinghouse Control Center, Date: 05/1961, No.: DADA44609H1X1A, NP#: NP50774-B, with 3 breakers, with Westinghouse Breaker, AB DE-ION, F frame, Catalog#: F3030, Style#: 1222099, Rated: 30A at 25°C, Volts: 600 AC, with starter, Westinghouse, Size 1, Design M, , Volts: 110-208/220/440-600, 1 Phase, 2HP/3HP/5HP, Cat#: 11200K1CCN, Mach Style #: 4530213G04



OAK-438

1, Switchgear Panel, Voltage Regular

Mfr: HK Porter Company Inc, 6 unit panel with 6 voltage regulars, steel clad enclosure, indoor type, high voltage



OAK-439

1. Transformer

Mfr: PEMCO Corporation, Type: Dry Type, Model No.: 336A7755P1, KVA: 600, 3 Phase, 60 Hertz, H1-H2-H3: 13800 Y 95 KV Bil, X1-X2-X3: 350 Delta 10 KV Bil, 150°C Rise, Class AA, Impedance: 6.26%, I2: at 170°C, Weight: 4680lbs, Pem. No.: 007676, SN: 16158, steel clad enclosure



OAK-440

1. Switchgear, Breaker Panel Board, No. 1B Motor Control Center

Mfr: Westinghouse Control Center, date: 05/1961, DADA44809MIXID, NP No.: NP50774-B, with 14 Single Breakers Panels, 6 double Breakers Panels, (14) Breaker, Single Breakers, Westinghouse, AB DE-ION, circuit breaker, F Frame, Style No.: 1222033, Rating: 20 Amp at 25°C, Volts: 600 AC, (3) Breaker: Double Breakers, Westinghouse, AB DE-ION, circuit breaker, F Frame, Cat. No.: F3030, Style No.: 1222099, Rating: 30 Amp at 25°C, Volts: 600, (3) Breakers, Double Breaker Panel, Westinghouse, AB DE-ION Circuit Breaker, F Frame, Cat. No.: F3070, Style No.: 1531787, Rating: 70 Amp at 25°C, Volts: 600 AC



OAK-441

1. Lathe

Mfr: American Steel Foundries, King Machine Tool Div, Sebastian Lathe, Lot No.: 14R, SN: K5490R, 48" Travel steel leg supports



OAK-442 A

1. Pump, Boiler Feed, No. 1A

Contract: T-1556, Mfr: Ingersoll-Rand Company, Number and Type: Two, motor-driven through variable speed hydraulic couplings, model 4CHTA, 10-stage centrifugal barrel type pumps, each with a shaft-driven gear type oil pump, Motor: 1000hp, 3600rpm, 2300 volts, drip-proof type, Oil Pumps and Coolers: One shaft-driven gear type oil pump rated 10gpm and 15psig, One auxiliary oil pump driven by a 1/2hp, 3450rpm, 440 volt vertical motor, One oil cooler requiring approximately 20gpm of 95°F cooling water, Hydraulic Coupling - Type and Size: American Blower Corp, #146 type VS, class 6 yrol fluid driven coupling with shaft-driven gear type oil pump and twin oil coolers, Performance Data:

Capacity: 30000lb/hr, Suction Head: 100psig, Discharge Head: 1800psig, Net Developed Head: 1700psig, Shutoff Head: 2060psig, Normal Temperature of Water: 320°F, Actual Pump Speed: 3425rpm, Efficiency: 76%, Bhp Required at Coupling: 937, Bhp Required at Hydraulic Coupling Input Shaft: 1000, Tag Data: Gpm: 661, RPM: 3425, SP Gravity: 918, Head Feet: 4500,

Hydro Test: 2820psi, Driver: 1000hp, Impellar No.: 4CHTA3YX5, SN: 0361-8172, with gear box reducer, Size: 146, Type: VS, Class: 6, Order No.: 1-32260, HP: 1000, Max RPM: 3580, Rotation: CCW, SN: 78-146-6034, with motor, electric, Mfr: Westinghouse Induction Motor, HP: 1000, Type: CS, Frame: 3AS2, Phase: 3, Cycle: 60, Volts: 2300, Amps: 213, RPM: 3563, °C Rise: 40, Locked KVA Code: E, SN: 1S-62P307



OAK-442 B

Contract: T-1556, Mfr: Ingersoll-Rand Company, Number and Type: Two, motor-driven through variable speed hydraulic couplings, model 4CHTA, 10-stage centrifugal barrel type pumps, each with a shaft-driven gear type oil pump, Motor: 1000hp, 3600rpm, 2300 volts, drip-proof type, Oil Pumps and Coolers: One shaft-driven gear type oil pump rated 10gpm and 15psig, One auxiliary oil pump driven by a 1/2hp, 3450rpm, 440 volt vertical motor, One oil cooler requiring approximately 20gpm of 95°F cooling water, Hydraulic Coupling - Type and Size: American Blower Corp, #146 type VS, class 6 yrol fluid driven coupling with shaft-driven gear type oil pump and twin oil coolers, Performance Data:

Capacity: 30000lb/hr, Suction Head: 100psig, Discharge Head: 1800psig, Net Developed Head: 1700psig, Shutoff Head: 2060psig, Normal Temperature of Water: 320°F, Actual Pump Speed: 3425rpm, Efficiency: 76%, Bhp Required at Coupling: 937, Bhp Required at Hydraulic Coupling Input Shaft: 1000, Tag Data: Gpm: 661, RPM: 3425, SP Gravity: 918, Head Feet: 4500,

Hydro Test: 2820psi, Driver: 1000hp, Impellar No.: 4CHTA3YX5, SN: 0361-3186, with gear box reducer, Size: 146, Type: VS, Class: 6, Order No.: 1-32260, HP: 1000, Max RPM: 3580, Rotation: CCW, SN: not available, with motor, electric, Mfr: Westinghouse Induction Motor, HP: 1000, Type: CS, Frame: 3AS2, Phase: 3, Cycle: 60, Volts: 2300, Amps: 213, RPM: 3563, °C Rise: 40, Locked KVA Code: E, SN: 2S-62P307



OAK-443

1. Switchgear, Motor Control Center

ICI Motor Control Center, 480 Volt AC, Mfr: Westinghouse Control Center, Date: 05/1961, No.: DADA44609HJXICI, NP No.: NP50774-B, consisting of: 3 section with breakers, (7) single breakers, with starters, Westinghouse Breaker, AB DE-ION circuit breaker, F Frame, Cat. No.: F3030, Style No.: 1222099, Rating: 30 Amp at 25°C, Volts: 600 AC, Starter, Westinghouse, Cat. No.: 11200K2CCN, Mech. Style: 453D263004, Design: N, Size 2 max ratings, Westinghouse Breaker, AB DE-ION circuit, F Frame, Cat No. F3030, Style No. 1222099, Rating 30 Amp at 25°C, Volts: 600AC, with (2) Westinghouse Starter, Cat No.: 11210K2CCN, Mech Style: 453D181G02, Design: M, Volts: 110 208-220 440-600, Stage 2 max rating



OAK-444

1. Switchgear, Motor Control Center

ICI Motor Control Center, 480 Volt AC, Mfr: Westinghouse Control Center, Date: 05/1961, No.: DADA44609HJXICI, NP No.: NP50774-B, consisting of: 3 section with breakers, (7) single breakers, with starters, Westinghouse Breaker, AB DE-ION circuit breaker, F Frame, Cat. No.: F3030, Style No.: 1222099, Rating: 30 Amp at 25°C, Volts: 600 AC, Starter, Westinghouse, Cat. No.: 11200K2CCN, Mech. Style: 453D263004, Design: N, Size 2 max ratings, Westinghouse Breaker, AB DE-ION circuit, F Frame, Cat No. F3030, Style No. 1222099, Rating 30 Amp at 25°C, Volts: 600AC, with (2) Westinghouse Starter, Cat No.: 11210K2CCN, Mech Style: 453D181G02, Design: M, Volts: 110 208-220 440-600, Stage 2 max rating with 12 breakers, 1-C-2 Motor Control Center



OAK-445
1. Tank, Miscellaneous Drain

Size: 535 gallon vertical welded steel cylindrical, Approx. Dimensions: 6'0" high(straight length) x 4'0" diameter, Plate: 3/8" shell and deck, 1/2" bottom ASTM A-283 Grade C, with ladder, all connections



OAK-446
1, Pump, Centrifugal
Number and Type: Two 16QEC-7 stage, vertical pit mounted, removable rotor type centrifugal pumps, Motor: 125hp, 1180rpm, 2300 volt open, dripproof motor, Performance Data: capacity: 950gpm, Net developed Head: 350ft, Shutoff Head: 395ft, Efficiency: 77%, Bhp: 109, Pump Data: Mfr: Worthington Corporation, Gpm: 950, RPM: 1180, Head Feet: 375, Driver HP: 125, SN: 1587903, with motor, electric, Mfr: Westinghouse, HP: 125, Phase: 3, Cycle: 60, Frame: 580 PH, Design: B, Cont. Speed, 40°C, Volts: 2300, Amps: 28.3, RPM: 1180, KVA Code: E, Style No.: 19N6935, SN: 2S-60



OAK-447
1. Pump, Centrifugal

Service: Condensate Pump, Number and Type: Two 16QEC-7 stage, vertical pit mounted, removable rotor type centrifugal pumps, Motor: 125hp, 1180rpm, 2300 volt open, drip-proof motor, Performance Data: capacity: 950gpm, Net developed Head: 350ft, Shutoff Head: 395ft, Efficiency: 77%, Bhp: 109, Pump Data: Mfr: Worthington Corporation, Gpm: 950, RPM: 1180, Head Feet: 375, Driver HP: 125, SN: 1587904, with motor, electric, Mfr: Westinghouse, HP: 125, Phase: 3, Cycle: 60, Frame: 580 PH, Design: B, Cont. Speed, 40°C, Volts: 2300, Amps: 28.3, RPM: 1180, KVA Code: E, Style No.: 19N6935, SN: 1S-60



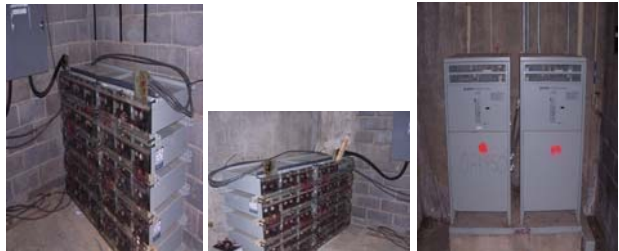
OAK-448
1. Tank, Air receiver, Control Air Receiver

Mfr: Richmond Engineering Company, Tank Dia: 30" OD, Overall Length: 84", Design Pressure: 125psi, Head Thk: 7/32", Shell Thk 3/16", Head rad: 2:1, Max. Working Temp: 650°F, Natl Bd#: 33587, Year 1960, MBI No. # 60RE2643, SN: L2387TK28, Vertical Welded Steel, Steel pedestal mounted



OAK-449
1. Tank, Air Receiver (Station Air)

Mfr: Richmond Engineering Company, Dimensions: 36" OD, Overall Length: 96", Max Work Temp: 650°F, Design Pressure: 175psi, Head Thk: 3/16, Head Rad: 2.4 RAD, MBI No.: 61-RE-515, Year 1961, SN: L3528-TK-19 vertical welded steel pedestal steel support



OAK-450
2. Battery Charges

Mfr: LA Marche A12B Battery Charger, with 60 Batteries, Mfr: DEKA UNIGY



OAK-451
1. Tank, Water Well Pressure

Size: 36" OD x 10' high vertical welded steel, Working Pressure: 125psi with 2" connections with piping controls



OAK-452
1. Transformer, Generator Grounding

50KVA, Non PCB with repair tag from Southwest Electric Company, 04/08/1985



OAK-453
1. Pump, Centrifugal

Service: Circulating Water Pump, Number and Type: two 30: HIFLO single stage, vertical, mixed flow, removable rotor type centrifugal pumps, Motor: 350hp, 700rpm, 2300 volt drip-proof motor, Performance Data: Low Water: capacity: 15000gpm, Net Developed Head: 64', Shutoff Head: 100', Efficiency: 75%, Bhp: 307, Normal water: Capacity: 20200gpm, Net Developed Head: 47', Shutoff Head: 100', Efficiency: 83%, Bhp: 276, Pump Data: Mfr: Worthington corporation, GPM: 20200, RPM: 720, Heat Feet: 47, Driver: 350hp, SN: 1588479. with motor, electric, Mfr: Westinghouse Induction Motor, HP: 350, Type CSF, Volts: 2300, RPM: 710, Phase: 3, Cycle: 60, Amps: 78.3, °C Rise: 40, Temp Method: Thermo, SN: 1S-62P887



OAK-454
1. Pump, Centrifugal

Service: Circulating Water Pump, Service: Circulating Water Pump, Number and Type: two 30: HIFLO single stage, vertical, mixed flow, removable rotor type centrifugal pumps, Motor: 350hp, 700rpm, 2300 volt drip-proof motor, Performance Data: Low Water: capacity: 15000gpm, Net Developed Head: 64', Shutoff Head: 100', Efficiency: 75%, Bhp: 307, Normal water: Capacity: 20200gpm, Net Developed Head: 47', Shutoff Head: 100', Efficiency: 83%, Bhp: 276, Pump Data: Mfr: Worthington corporation, GPM: 20200, RPM: 720, Heat Feet: 47, Driver: 350hp, SN: 1588478, with motor, electric, Mfr: Westinghouse Induction Motor, HP: 350, Type CSF, Volts: 2300, RPM: 710, Phase: 3, Cycle: 60, Amps: 78.3, °C Rise: 40, Temp Method: Thermo, SN: 2S-62P887



OAK-455
1. Pump, Centrifugal

Service: Service water Pump, Number and Type: two model 14APH - 3 stage vertical turbine type pumps with semi-open bronze impellers, cutless rubber bearings, stainless shaft and curb ring, Motor: 100hp, 1760rpm, 2300 volt hollow shaft motor. Performance Data: Capacity: 1500gpm, Total Head: 210', Shutoff Head: 260', Efficiency: 83.5%, Bhp: 95, Pump Data: Mfr: Ingersol-Rand, Model No.: 14APH, Stages: 3, Gpm: 1500, RPM: 1760, Head Feet: 210, SN: 0361-3028, with motor, electric, vertical, Mfr: General Electric, HP: 100, Type: K, Code: F, Frame: 6284VY, Design: B, Volts: 2300, Phase: 3, Cycle: 60, Amps: 24.3, Speed: 1770Rpm, Cont Rise: 40°C, SN: XVJ1027133



OAK-456
1. Pump, Centrifugal

Service: Service Water Pump, Number and Type: two model 14APH - 3 stage vertical turbine type pumps with semi-open bronze impellers, cutless rubber bearings, stainless shaft and curb ring, Motor: 100hp, 1760rpm, 2300 volt hollow shaft motor. Performance Data: Capacity: 1500gpm, Total Head: 210', Shutoff Head: 260', Efficiency: 83.5%, Bhp: 95, Pump Data: Mfr: Ingersol-Rand, Model No.: 14APH, Stages: 3, Gpm: 1500, RPM: 1760, Head Feet: 210, SN: 0261-3156, with motor, electric, vertical, Mfr: General Electric, HP: 100, Type: K, Code: F, Frame: 6284VY, Design: B, Volts: 2300, Phase: 3, Cycle: 60, Amps: 24.3, Speed: 1770Rpm, Cont Rise: 40°C, SN: XVJ1027132



OAK-457
1. Pump, Firewater, Vertical

Number and Type: one model 10Aph - 7 stage vertical turbine type gasoline engine driven fire pump with semi-open bronze impellers, cutless rubber bearings, stainless shaft and curb ring and johnson right angle gear model HC-50, Performance Data: Capacity: 500gpm, Total Head: 273', Shutoff Head: 335', Efficiency: 81%, Bhp: 42.5, Pump Data: Mfr: Ingersol-Rand, GPM: 500, RPM: 1750, Head Feet: 273, Hydro Test Pressure: 180psi, SN: 0161-3169, with engine, diesel fired, Mfr: Caterpillar, RPM: 2400, Engine No.: 145-92225YS00605, No. Cylinders: 4, Advent. KV: 2400 RPM, Displacement: L with diesel storage tank: 24"OD x 5' long Horizontal



OAK-458
1. Screen, Travel Water

Contract: T-1558, Mfr: Link-Belt Company, Number and Type: One 120" wide model no. 45A, back-wash, vertical type, 3hp, 1750rpm, 440 totally enclosed motor with helical speed reducer, Performance data: Approximate time to make one complete revolution of screen: 11.2 minutes at high speed, 44.8 minutes at low speed, Speed of Screen: 2.5fpm or 10 fpm, Capacity: 40400gpm, Screen Wash Water Required: 315gpm, Pressure of Screen wash water: 80psig, Loss of Head Through Screen at Low Water With 14"6" Submergence: 6'9" (low water) 44'9" (high water), with 100% Clean Screen: 1.92"H2O (low water) .036"H2O (high water), With 50% Clean Screen: 7.23" H2O (low water) .148"H2O (high water)