



Inventory List for San Angelo Location



SAN-203
Transformer

Mfr: Allis-Chalmers, Power Transformer, 3 phase, 60 cycles, Class FOA, H WDG: 37.5 MVA FOA 55°C Rise, 42 MVA FOA 65°C Rise, X wdg: 37.5 MVA FOA 55°C Rise, 42 MVA FOA 65°C Rise, 69,000 GRD. Y. Volts 350 BIL, 13,800 Δ Volts 110 BIL, Impedance: H-X at 37.5 MVA 11.1%, H-Wdg Neutral 110 BIL, Untanking 5711 Lbs, Oil: 2749 gallons, Core & Coils: 60,600 Lbs., Oil Lbs: 20,618, Date of Manufacture: Jan 1965, Total Weight: 104,118 LBS, PCB-PPM: 2, Test DAte: 4/30/98 SN: 47-0105-28275-1



SAN-204A
Pump

Centrifugal pump, Condenser circulating water, Mfr: Allis-Chalmers, Type: AXVRM, Size: 60 x 42, Net Weight: 28,150 Lbs., Liquid pumped: water, Flow Design: 39,000 GPM, Flow Temp: 80 F SP GR 1.0, Differential: 16.3 Head Feet, RPM: 435, Case Matl: Cast Iron, Model No.: 108-985-601, Impellar Dia: 38.21", Serial Number: 350-2238-2, W/Motor, Electric - Vertical, Mfr: Allis Chalmers, Type: ANVOD, HP: 250, Frame: 3730, Time Rating/Temp Rise C: Cont/60°C, RPM full load: 438, Voltage 2400, Full Load Amps: 69, Enclosure: NEMA II outdoor, Full load torque: 3000 FT Lbs, Service Factor: 1.15, Phase: 3, Cycle: 60, NEMA design: B, SN: 32735-2



SAN-204B
Pump

Centrifugal pump, Condenser circulating water, Mfr: Allis-Chalmers, Type: AXVRM, Size: 60 x 42, Net Weight: 28,150 Lbs., Liquid pumped: water, Flow Design: 39,000 GPM, Flow Temp: 80 F SP GR 1.0, Differential: 16.3 Head Feet, RPM: 435, Case Matl: Cast Iron, Model No.: 108-985-601, Impellar Dia: 38.21", Serial Number: 350-2238-1, W/Motor, Electric - Vertical, Mfr: Allis Chalmers, Type: ANVOD, HP: 250, Frame: 3730, Time Rating/Temp Rise C: Cont/60°C, RPM full load: 438, Voltage 2400, Full Load Amps: 69, Enclosure: NEMA II outdoor, Full load torque: 3000 FT Lbs, Service Factor: 1.15, Phase: 3, Cycle: 60, NEMA design: B, SN: 32735-1



SAN-205A
Pump & Motor Assembly

Consisting of: Pump, Centrifugal - Vertical, Mfr: Worthington, Impeller DIA: 10 5/8", repair tag: 11-4-99, No tag on pumps for ID, W/ Motor/Electric - vertical, Mfr: US Electrical Motors, HP: 60, Frame: 405 UP, Type: JU, Rating: 55°C, Design Code: B, Code: F, RPM: 1800, Volts: 220/440, Amps: 148/74, SN: 1367599



SAN-205B
Pump & Motor Assembly

Consisting of: Pump, Centrifugal - Vertical, Mfr: Worthington, Impeller DIA: 10 5/8", repair tag: 11-4-99, No tag on pumps for ID, W/ Motor/Electric - vertical, Mfr: US Electrical Motors, HP: 60, Frame: 405 UP, Type: JU, Rating: 55°C, Design Code: B, Code: F, RPM: 1800, Volts: 220/440, Amps: 148/74, SN: 1386374



SAN-206
Pump & Motor Assembly

Consisting of: Pump, Centrifugal - Vertical, Mfr: Worthington, Size: 12L 54-3 STA., SN: VTP9845, W/repair tag - repaired byL Centri Flow, Model No.: 12L, Repaired: 02-26-01, Impeller DIA: 9 3/8 8 9/10, SP G: 3, W/Motor/Electric- Vertical, Mfr: US Electrical Motors, HP: 40, Phase: 3, Frame: 364UP, Volts: 220/440, Amps: 100/50, Design: B, Code: F, RPM: 1800, Service Factor: 1.15, Cl: B, SN: 3607429



SAN-207A
Pump & Motor Unit

Service: Condensate Pump, Mfr: Allis-Chalmers, Type & Size: 14" VTX - 4 Stages, Net Weight(pump only): 3310, Driver Type/RPM: 125 HP / GV / 1770, SN: 840-2500-1T, W/Motor, Electric - Vertical, Mfr: Allis-Chalmers Mfg. Co., Type: GV, Model No.: 54, HP: 125, Frame: 445 UP, Time Rating: CONT, Temp Rise Deg C: 40, RPM: 1770, Voltage: 480, Full load amps: 135, Enclosure: Drip Proof, Full load Torque: 371 LB FT, Phase: 3, Cycle: 60, Nema design: B, SN: 7-5116-33111-1-1



SAN-207B
Pump & Motor Unit

Service: Condensate Pump, Mfr: Allis-Chalmers, Type & Size: 14" VTX - 4 Stages, Net Weight(pump only): 3310, Driver Type/RPM: 125 HP / GV / 1770, SN: 840-2500-2T, W/Motor, Electric - Vertical, Mfr: Allis-Chalmers Mfg. Co., Type: GV, Model No.: 54, HP: 125, Frame: 445 UP, Time Rating: CONT, Temp Rise Deg C: 40, RPM: 1770, Voltage: 480, Full load amps: 135, Enclosure: Drip Proof, Full load Torque: 371 LB FT, Phase: 3, Cycle: 60, Nema design: B, SN: 7-5116-33111-1-2



SAN-208
Pump & Motor Assembly

Boiler Feed Pump Service, Mfr: Pacific Pumps Inc, Size: 4" SLB, No. of Stages: 11, Type: BFI, LB HR: 390,000, US GPM: 833 @ 260°F, RPM: 3570, Discharge Pressure: 1865 PSIG, Differential Head: 4535 FT, Hydro Test: 3500 PSI, SN: 34073, W/Motor, Electric - Induction, Mfr: The Louus Allis Company, Type: COGX, HO: 1250, Volts: 2300, Cycle: 60, C Rise: 40°, Code: F, Amps: 260, Frame: 689SU, RPM: 3590, Phase: 3, Srev. Factor: 1.15, Cont. Duty, SN: 2265817001, W/Lube Oil reservoir - Capacity: 75 gallons, W/Motor- Vertical



SAN-209
Pump & Motor Assembly

Boiler Feed Pump Service, Mfr: Pacific Pumps Inc, Size: 4" SLB, No. of Stages: 11, Type: BFI, LB HR: 390,000, US GPM: 833 @ 260°F, RPM: 3570, Discharge Pressure: 1865 PSIG, Differential Head: 4535 FT, Hydro Test: 3500 PSI, SN: 34074, W/Motor, Electric - Induction, Mfr: The Louus Allis Company, Type: COGX, HO: 1250, Volts: 2300, Cycle: 60, C Rise: 40°, Code: F, Amps: 260, Frame: 689SU, RPM: 3590, Phase: 3, Srev. Factor: 1.15, Cont. Duty, SN: 2265817002, W/Lube Oil reservoir - Capacity: 75 gallons, W/Motor- Vertical



SAN-210A
Pump & Motor Assembly

Consisting of pump, centrifugal-vertical Turbine type, Mfr: Allis-Chalmers, Model: 10VTO, SN: 840-A279.1T, W/Motor, electric-vertical, Mfr: Allis-Chalmers, Type: GV, Frame: 284UP, Design: B, HP: 15, Serv. Factor: 1.15, RPM: 1750, Cycle: 60, Phase: 3, Volts: 220 / 440, Amps: 38.6 / 19.3, KVA Code: F, Duty: CONT, C Rise: 40 Deg, Class: Unsl: A, SN: 7-5105-34203-1-1



SAN-210B
Pump & Motor Assembly

Consisting of pump, centrifugal-vertical Turbine type, Mfr: Allis-Chalmers, Model: 10VTO, SN: 840-A279.2T, W/Motor, electric-vertical, Mfr: Allis-Chalmers, Type: GV, Frame: 284UP, Design: B, HP: 15, Serv. Factor: 1.15, RPM: 1750, Cycle: 60, Phase: 3, Volts: 220 / 440, Amps: 38.6 / 19.3, KVA Code: F, Duty: CONT, C Rise: 40 Deg, Class: Unsl: A, SN: 7-5105-34203-1-2



SAN-211
Condenser

Surface Steam, Type: Steam Surface Condenser Horizontal Single Pass Divided Water Box, Mfr: Allis-Chalmers, P.O. No.: 3883-M-7, Performance - Effective Surface: 48,000 Sq. Ft., Duty: 493,815,595 BTU/HR, Cleanliness Factor: 85%, Construction - Design Pressure: 30" HG VAC., 20 PSIG, Test Pressure: Fill with Water 25 PSIG, Tubes: No.: 7486, size: 7/8 IN OD, Thick: 18 BG, Matl: Admiralty B-11, Shell: Thick: 3/4 IN, Matl: CU.Brg Stl A-285, Connections - Steam Inlet: 12'-0" x 12'-6", Size & Rating Water Box - Two 8'-1" wide 7'-8" H, Tubes Length: 28'-0", Tubes Overall: 28'-2 9/16", Tubes Weight - Empty: 270,000, Operating: 393,000 / 14,766 gal., Flooded: 643,000 / 44,778 gal, Condenser SN: 91101



SAN-212
Motor Control Center- MCC

Mfr: General Electric- 7700 Line Control Center, Main Amps: 600, Power Volts: 480, Current Volts: 120, Order No.: 313538/P, Plant: N, Dom of Mfr: 1/13/1965, SN: BJA1A2P475C236986-3, W/ 34 Breaker Panel Components, Size 1 - General Electric, Type: FVNR, Amp: 1 HP, Volts: 480, Cont. Volts: 120, Plant: N, Size 3, General Electric, Amps/HP: 50 HP, Volts: 480, Cont. Volts: 120, Type: FVNP, Plant: N, Steel Enclosure



SAN-213
Panel, Switchgear

1- Panel, Switchgear - 2 Section No. 1 gas Turbine Generator, Control Panel, Consisting of: (2) Purity Meter (2) Hydrogen & Fan Pressure Gauge W/Tattletale and warning Indicator lights for: Hydrogen Seal Oil Pump, Hydrogen Seal Oil Backup Pump, Hydrogen Seal Oil Vacuum Pump, Steel Enclosure



SAN-214A
Panel, Breaker

Switchboard, Mfr: Western Switchboard Co., Type: NDP4L225, Amps: 225, Volts: 120 / 208, Phase: 3, Wire: 4, SN: C-374844, Steel Enclosure, Single Compartment Section



SAN-214B
Panel, Breaker

Switchboard, Single Compartment/Section, Mfr: Westinghouse, Type: NQC Panelboard, Amps: 100, Neut. Amps: 100, Volts: 120 / 208, Phase: 3, Wire: 4, Cat/S.O. #: SF-3940/IT.1, Steel Enclosure



SAN-215
Control Room

For Gas Turbine and Steam Turbine Generators



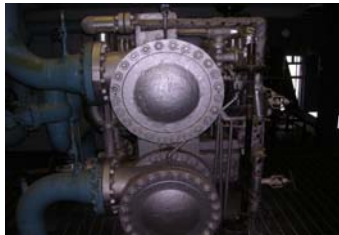
SAN-216
Condenser

SSU Feed Waterheater, Mfr: Baldwin-Lima-Hamilton Industrial Equipment Division, Max. Working Pressure - Shell: 50 & FVAC PSI at Metal 400°F, Max. Working Pressure - Tubes: 300 PSI at Metal 300°F, Test Pressure: Shell: 150 PSI, Tubes: 450 PSI, Size: 51-361, Type: SSU Feed Waterheater, SN: 51010041, Year Built: 1965



SAN-217
Condenser

Steam condenser Gland, Mfr: Westinghouse, Size: 350, Instr. Book: 1250C579, Min. Cooling Water GPM: 600, SN: 16A3859-1



SAN-218
Pump

Steam Jet Air, Mdr: Allis-Chalmers, Steam Pressure: 305 PSI Gauge, Steam Temperature: 1015 DEG FHAR, SN: 1383



SAN-219
Compressor

Instrument Air, Mfr: Nash Compressor, Size: AD/203, RPM: 1775, Test No.: 86U-2304, W/ Motor, electric, Mfr: Marathon Electric, Model No.: RC404TSCDS7026-HNW, Frame: 4.4TS, Type: TDS, Design: B, Phase: 3, Cycle: 60, KVA Code: F, Insul. Cl.: B, Enclosure: DP, Duty: Cont., Max. AMB: 40°C, Volts: 230 / 466, Amps: 238/119, HP: 100, RPM: 1775, SF: 1.15, SN: 09016223 / 13-05, W/ Air Receiver Tank w/filter, Skid Mounted as Unit



SAN-220
Compressor

Air, Mfr: Suleair, Unit Model No.: LS16/75H/A/SUL, B.O.M. No.: LS16/005 6090, Air Pressure rated Maximum: 115/125 PSIG, Unit SN: 003-125004, W/Compressor, Air, Mfr: Sulair, Assembl.: USA, Parts No.: 02250100-793, SN: 006-01000960, W/ Motor, Electric(Could not get to tag) Steel Box enclosure- 4'W x 6'-0"L x 5'H w/ Air receiver tanks (2), 18" OD x 4'-0" High, Seam to Seam vertical welded steel, working pressure: 125 PSI, W(3) Air Filters all enclosed in Wood enclosure box - 5'W x 5'L x 6' High



SAN-221
Tank

Instrument Air, Mfr: Richmond Engineering Co., Size: 36" DIA, Overall Length: 96", Design Pressure: 125 PSI, Head Thickness: 1/4", Shell Thickness: 3/16", Head Rad. INS.: 2:1 Ratio, Max. Working Temp: 500°F, Nat'l Board No.: 46944, Year: 1964, SN: 18901, Vertical Welded Steel, Steel Support, W/Pressure gauge, Piping and valves



SAN-222
Tank

Service Air Receiver, Mfr: Niles Steel Tank Company, Size: 36" DIA, Overall Length: 96", Max. Design Pressure: 125 PSI, Max. Temp.: 650°F, Head Thk.: .187", Head Rad.: ELLIP, Shell Thk.: .187", Joy No.: 526389, Year Built: 1964, SN: 16259, Vertical Welded Steel, Steel Support Base



SAN-223
Dryer

Oriad Air(Instrument Air), Mfr: The C.M. Kemp Mfg. Co., Model No.: 50EA-1, Service: Air, Current: 460-3-60, Flow: 80SCFM, Pressure: 100 PSIG, Temp: 100°F, Dryer Cycle: 12 Hours, W/ (2) Filters/Dryer Columns, Mfr: C.M. Kemp Mfr. Co., Working Pressure: 165 PSI, Max. Temp: 650°F, Shell: .277", Heads: 3/4" - 1", Radius: F Vertical, EB#: 794 Weld Steel, Built: 1964, SN: 11191-1 & 1191-2 W/ (4) Filters - Air Dryers, 80 5/8" OD x 38" Hi, Bolted Top, W/1" Connections, W/Pressure gauges on each



SAN-224
Compressor

Air, Mfr: Joy Manufacturing Co., Class: WL-80, Model No.: 50-B, Max: Pressure: 125 PSI, Max. Speed: 1160 RPM, Shop No.: 47289, 4 Cylinders, w/motor, electric, Mfr: General Electric, Tri-Clad, HP: 50, Service Factor: 1.15, F.L. RPM: 1770, Volts: 440, Phase: 3, Cycle: 60, F.L. Amps: 61.5, Type: K, Frame: 365 U, Class Design: B, KVA Code: F, C Rise: 40 Deg, Time Rating: Cont, Model No.: 5K4365A21Y50A, SN: WY405007, Mtd. on Steel Skid



SAN-225
Purifier

Mfr: ALFA LAVAL, Unit Model No.: SMMB304, Order No.: 45099, Job Ref. No.: 6347, Year Built: 1999, Unit SN: SM992786, W/ Pump and Motor assembly - Separator No.: MMBB04S/11, Product No.: 881151-01-03, Inlet & Outlet: 548971-01, Bowl:548714-01, Machine Btm Part: 563003-01, Max. Speed-Bowl: 9510 R/Min, Direction Rotation Bowl: CCW, Speed Motor Shaft: 3600 R/Min, Frequency: 60HZ, Rec. Motor Power: 2.2 KW, Max. Density of Feed: 110 KG/M³, Max. Density of Sediment: 1600 KG/M³, Process Temperature Min/Max: 0/100°C, Unit Complete W/Starter, viaving, controls, piping, lube tank, S/S Connections, All Mtd on Steel Frame Base



SAN-226
Water Screen

Traveling, Model No.: 45A, Mfr: LINK BELT Company, Order No.: K67419, Number of Screens: 2, Number of Baskets per screen:26, No. of Spray Nozzles/Screen: 14, Spray Nozzle Orifice: 5/16", Screen Openings: 5/16 Ag., Head Enclosure: 10'-8", Required left above Floor: 27'-6", Weight (one screen): 19,000 #, Chain: Steel, Drive Motor HP/RPM: 1/1750, Performance: Basket Velocity: 10 FT./Min., Water Velocity @ 40,000 GPM, 12.5' depth: 1.6 FT/Sec., Water Velocity @ 37,000 GPM, 12.5' depth: 1.6 FT/Sec, Wash Water Supply GPM per Screen: @125 PSIG -326, @100 PSIG - 292, @ 75 PSIG - 254, No. SN's - Each



SAN-230
Tank

Turbine Oil Storage, Mfr: Wendland Mfg. Co., Vertical Welded Steel, 2 Seam, Capacity: 4500 gal., Size: 8' DIA x 13' High, 1/4" flat bottom, 3/16" shell and deck, No. SN for Identification, W/ 20" cleanout plate





SAN-231
Welder

Arc, Mfr: Lincoln Electric - Idealarc DC-250, Single Phase Input: Volts: 208 / 230 / 460, Amps: 73 / 66 / 33, Hertz: 60 at rated output, DC Amps: CV 250, CC 200, DC Volts: CV 30, CC 28, DC% Duty Cycle: CV 50, CC 50, Model No.: DC-250, Code No.: 9014M, SN: U1971211320



SAN-232
Feeder, Wire

Mfr: Lincoln Electric, Model No.: LN-25, Code No.: 9811 B, DC Arc Voltage 15-40V 5 Amp, Nema EW3, W/CC Wire Speed Setting, SN: 203699, Mounted on 4 Canester Steel Base Case



SAN-233
Welder

Arc, Mfr: Miller Electric Mfg. Co., Stock No.: 901782, Volts: 200 / 230 / 460, Amperes: 103 / 90 / 45, KW: 12.4, Phase: 1, Hertz: 60, SN: JE937186, Constant Current AC/DC, Arc Welding Power Source DIALARC-HF



SAN-234
Water Cooler

Mfr: General Shelters, Model No.: PORT-A-COOL 2000, W/36" Fan, W/All Controls, Caster Mounted for portability, 110 Outlet



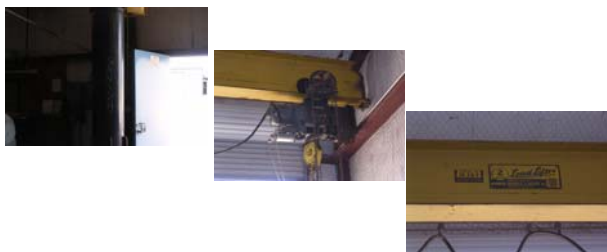
SAN-235
Lathe

Welding Shop, Mfr: LE Bloud, 19 In Heavy Duty 60" Travel, w/All Tooling



SAN-236
Welder

Arc, Mfr: National Cylinder Gas Sureweld- Chemtron, Model No.: SU-225, AC/DC Arc Welder, Volts: 230/460, Amperes: 90/45, Amp Sec Shorted: 142/71, KW: 12.8: Frequency: 60 Cycle, Single Phase, SN: R372457



SAN-237
Crane, Overhead

I-Beam Support, Mfr: Manning Maxwell and Moore Inc., Capacity: 2 Ton, Model: Load Lifter W/14" I-Beam Support, Length: 15', Pipe Support: 12 3/4", SN: 15363, Chain Operated w/ Electrical Controls, w/ shaw box - 2 Ton



SAN-238
Sand Blaster

Mfr: SKAT Blast, Inc., Model: Skat Blast, Dry Blast System, Steel Enclosure w/Passthrough Arm - Rubber hand Gloves for left & right w/electric charge, w/storage case w/vertical motor



SAN-239
Lathe

Mfr: The Oster Manufacturing Company, Cat. No.: 502NE, 12" travel, Cart Mounted w/Tooling, Connect to 110 Volt Line



SAN-240
Lot

Fan Blades, Carbon Steel and High Metal Content - Stainless & Aluminum



SAN-241
Electrode Stabilizing Oven

Mfr: Phoenix Products Company Inc., Model: 16C-Phoenix Dryrod, Type: 300, Temp Range: 100-550°F, Watts: 1000, Volts: 120 AC



SAN-242
Tank

Water Storage, Mfr: Unknown, Size: 12' DIA x 15' High, Vertical Fiberglass, Capacity: 300 BBL, Insulated, Not Installed, Flat Bottom



SAN-243
Reverse Osmosis System

2 Pass, Mfr: MEDRO Systems Incorporated, Consisting of: Skid No. 1, Control and Feed 1- Vessel- Pressure, Mfr: MEDRO Systems Inc., 16" OD x 10' High, Vertical Welded Steel Stainless, Max. Allow WP: 100 psi at 150°F, Min. Design Metal Temp. - 20 Deg. F at 100 PSI, SN: 99-06-01, 1-Vessel-pressure, Mfr: MEDRO Systems, Inc. 16" OD x 10' High, Vertical Welded Steel Stainless, Max. Allow WP: 100 PSI at 150 Deg. F, Min. Design Metal Temp. - 20 Deg F at 100 PSI, W/ Solenode Valves, Mfr: Century Instr. Co, Spring: 8400, Service: PV-1016B, PV-1005B, W/Diaphragm Pumps, Bellows Pumps, W/Electrical Control, W/Walton 4600 Instrument Meter, W/Circulatory Pump & Motor, W/Microprocessor Dosing Pumps (2), W/Control Panel, W/RO 1st Pass & RO 2nd Pass Controls, Digital Readout, 6' Wide x 14' Long skid, Skid No. 2: Consisting of: (2) Cartridge Filters, Mfr: US Filter Plymouth Products, Model: ST-BC-8, No. of Cartridges: 8, Operating Pressure: 125 PSI, W/Ashcroft Industrial Control Equipment Enclosure, Cat. No. D424B x UD, Range: 30 PSID, W/Ashcroft Pressure Gauges, W/Walton 4600 Digital readout metering, W/(2) Transistor Inverters.



SAN-244
Tank

1st Pass Product Storage-Reverse Osmosis System, Size: 6'OD x 8' High, Capacity: 1000 gallon, Vertical Fiberglass Flat bottom, W/2" Connections PVC W/PVC Valving W/3" Vent Line



SAN-245
Tank

2nd Pass Product Storage-Reverse Osmosis System, Size: 8' OD x 12' High, Capacity: 3000 gallon, Vertical Fiberglass Flat Bottom, W/2" Connections PVC in PVC Valving



SAN-246
Tank

Neutralization-Reverse Osmosis System, Size: 8'OD x 6' High, Vertical Fiberglass, Capacity: 1000 gallon, Flat Bottom, Closed Top, W/2" PVC Connections PVA Valving and Piping



SAN-247
Generator Set

Mfr: Cummins, Model No. 6BT5.9-GC1, KW: 80, KVA: 100, PF: .8, Phase: 3, Voltage: 208-240/416-480, Amps: 278-240 / 130-120, Duty: Standby, Class of Insulation: F, Hz: 60, ID No.: 80BT61/36559C, SN: A900296109, W/Engine/Diesel Fired, Mfr: Cummins, 6 Cylinder Engine 359, Series B, CPL: 0792, Injector PN: 391 7040, Cust. Spec.: 100-2351, Rated HP: 135, RPM: 1800, Fuel Rate at Rated HP: 77.0 MM³/stroke, Model Name: 6BT-5.9, Dem: 01/11/990, SN: 44439635, Steel Enclosure: 2'W X5'L x 4'6"H



SAN-248
Tank

Condensate Water Storage, Size: 20' OD x 25' High, Vertical Welded Steel, Capacity: 25 PSI, Capacity gallons: 60,000, Flat Bottom, 1/4" Bottom, 3/16" Shell and Deck, W/ 8" Fill Line & Ladder



SAN-249
Tank

Pressure Filter Backwash System, Mfr: Bulldog Steel Products, Size: 8' Diameter, Length: 25' High, Vertical Welded Steel, Working Pressure: Atmos, Capacity: 10,000 gallons, Flat bottom, 3/16" shell and deck, SN: S-2738, W/8" Connection w/Ladder, W/Safety railing on top



SAN-250
Tank

Pressure Filter Backwash System - Size: 6' DIA x 15' High, Vertical Fiberglass closed top flat bottom



SAN-251A
Tanks

Pressure Filter Backwash System, Mfr: Allis-Chalmers Water Conditioning Equipment, Size: 6' DIA x 5' High, Capacity: 1000 gallons, Vertical Welded Steel w/ Pedestal lrf Supports, Cone Top & Bottom, 1/4" bottom & top, 1/4" shell, W/24" cleanout plates, W/ 5" PVC Connection for Inlet and Outlet



SAN-251B
Tanks

Pressure Filter Backwash System, Mfr: Allis-Chalmers Water Conditioning Equipment, Size: 6' DIA x 5' High, Capacity: 1000 gallons, Vertical Welded Steel w/ Pedestal lrf Supports, Cone Top & Bottom, 1/4" bottom & top, 1/4" shell, W/24" cleanout plates, W/ 5" PVC Connection for Inlet and Outlet



SAN-252
Pressure Drill

(Mechanic Shop) Press. Drill - Belt Driven, Mfr: Royersford - Excelsior, Size: 21", Motor Driven Belt - 2" Belt, 2' Wide x 2' Long Surface for placement



SAN-253
Pressure Drill

Adjustable Height - Motor Driven, Mfr: KBC Tools and Machinery W/Spindle Speed - Motor 900-1800 RPM W/Drive Sockets and All Tooling, 2' x 2' working surface - steel



SAN-254
Saw, Band

Belt Driven, 3/4" Band, Motor Operated W/All Tooling, 3' Wide x 6' Long, Working Surface - Steel



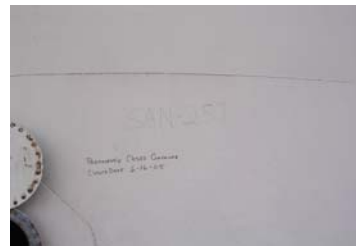
SAN-255
Tank

Condensate Water Storage, Size: 12' DIA x 15' High, Vertical Welded Steel, Capacity: 21,000 gallons, 1/4" flat bottom, 3/16" Shell and Deck W/Valving, Piping, W/20" cleanout plate 4" fill line



SAN-256
Tank, No. 2

Fuel Oil Storage, Size: 840,000 gallon Capacity, Mfr: Con-Rad-Division of US Industries Inc., P.O. NO.: A-23482, Max. WP: 350 PSI, Max. Temp: 500°F, Built: 1972, SN: 7950-0111, 1/4" flat bottom, 1/4" shell and deck, Vertical Welded Steel, 5 Ring, 50" DIA x 40' High



SAN-257
Tank, No. 2

Fuel Oil Storage, Mfr: Gorbett, Inc., Size: 95' DIA Nominal, Nominal Height: 40 Ft., API STD: 650, Nominal Capacity: 50,000 BBL, Specific Gravity: 1.0, 1/4" flat bottom, 1/4" shell and neck, Year built: 1973, W/Ladder, All Connections



SAN-258
Lot

Blades - Fan, Carbon Steel Inner & Outer w/Blades, aluminum and carbon blades - Halves, 60" DIA 1/2 blades each



SAN-259
Tractor

Mfr: International, Max. Gross Weight: 2925 LBS, Machine Model No.: 234, Conforms to: 328.52, Ropes Part No.: D-1300-1846, Ropes SN: 44976, Performance Standard measured in accordance with J1194 W/Chemical Tank and attachment on front with sprayer W/Hitch attachment and Ball on Rear



SAN-260
Tractor

W/Front Loader and Backhoe, Mfr: Ford, Model No.: 4610, W/Front end loader attachment: Ford Model: 7209, Series: 7209, SN: WL64983, W/6' Load bucket x 20" Deep, Hydraulic Operated w/Backhoe attachment: Mfr: C.D. Kelley & Son, Model No.: B30FH, SN: 871483-006243, W/Bucket - 12"-14"x14"D- Hydraulic Operated w/Brushhog/Grass cutter attachment: 4'wide x 4' long to single spindle tire-48" blade cut



SAN-261
Rotor - Spare

For Gas Turbine Generator



SAN-262A
Pump & Motor Assembly

Consisting of: Pump, Centrifugal, Service: Service Water, Mfr: Paco Pumps, Cat. No.: 29-30958-12006, Stock No.: 306391, GPM: 280, Total Head Feet: 45 Feet, Impeller: 7.5", SN WJ94E0150501A, W/Electric Motor, Mfr: Baldor, HP: 7.5 TE, Phase: 3, Cycle: 60, Frame 215T, Series: F1293, Volts: 280-230/460, Amps: 21.5-20/10, RPM: 1725, SER. Factor: 1.15, Class: F. Code: J, Design: B, No Number for Identification



SAN-262B
Pump & Motor Assembly

Consisting of: Pump, Centrifugal, Service: Service Water, Mfr: Paco Pumps, Cat. No.: 29-30958-12006, Stock No.: 306391, GPM: 280, Total Head Feet: 45 Feet, Impeller: 7.5", SN WJ94E0150501B, W/Electric Motor, Mfr: Baldor, HP: 7.5 TE, Phase: 3, Cycle: 60, Frame 215T, Series: F1293, Volts: 280-230/460, Amps: 21.5-20/10, RPM: 1725, SER. Factor: 1.15, Class: F. Code: J, Design: B, No Number for Identification



SAN-263
Battery Charger

System: Consisting of: Battery Charger System [1] Switchgear Panel - DC Panel - DO-2, Breakers - 125 DC Volts Breaker Panel, 5 Section, 6 Compartments w/Breakers (3) Westinghouse Circuit Breaker, AB-DE-ION, F-Frame, Cat. No. F2040, Rating: 40A @ 40°C, Style No.: 371D375G04, Volts: 600 AC, Volts: 250 DC W/Breakers (3) Westinghouse, AB-DE-ION, F-Frame, Cat. No.: 1531779, Rating: 100A at 25°C, Volts: 600 AC, W? D-C Volts Meter, D-C Amperes Meter, Ground Fault recorder, Charger 1A & 1B DC Volt and DC Amperes Meters all Steel Enclosure, Hughes Electronics Company, W/Batteries - Quantity: 60, Mfr: FIAMM, Model: SD 23, 440 AH, All Self Contained on Steel Racking



SAN-264
Compressor Unit

Consisting of: Compressor, Air, Mfr: Quincy Compressor, Model: 310-105, SN: 6214140, Job No.- SN: 308-24-4610-87L, W/Motor, Electric, Mfr: Wagner, HP:1.5, Design: B, Type:DP1, Frame: 184, Model: 184-11375-01, RPM: 1750, Phase: 3, Cycle: 60, Volts: 240/480, Code: K, Amps: 4.4/2.2, CONT Duty - 40 Deg C, Thermal Prot.:None, SF: 1.2, SN: AAJ3U W/Tank, Air Reciever, 20" OD x 48" Long, 125 PSI UP, Horizontal Welded Steel, Mfr: Joy, Steel Foot Mounted



SAN-265
Switchboard

Breaker Panel - Mfr: General Electric 7700 Line Control Center, Main Amps: 600, Power Volts: 480, Continuous Volts: 120, Plant: N, Order No.: 31353A/P, Mfr. Date: 1/13/1965, W/43 Breakers, (41)- Size 1 Breakers - General Electric, Type FDR, 480 Volt, Size 1 Breaker - Genral Electric, HP 1.5, Volts 480, CONT 120, Type: FVNR, Plant N (1) Breakers - Mfr: General Electric, Size: 3, HP: 50, Volts: 480, CONT: 120, Type: FVNR, Plant: N, (2) Breaker - Mfr: General Electric, Size: 4, HP: 60, Volts: 480, CONT: 120, Type: FVNR, Plant: N, Steel enclosure



SAN-266
Switchgear Panel

Mfr: Federal Pacific, Consisting of: 5 Sections, Breaker Section: 12 Section Compartment W/Breakers - 12 each, Mfr: Federal Pacific Electric Co., Low Voltage Power Circuit Breaker, Type: FP-50, Frame: 300, Max. Voltage: 600 AC, Rated Frequency: 60 Cycle, Rated CONT. Current: 300, Rated Interrupt. Current: 50,000, Service Trip Device Type: TD-2, Time Current Curve No.: 690815C, Sections W/ blank For Transformer use, Steel Enclosure



SAN-267
Switchboard Panel

Breaker Panelboard, Mfr: General Electric, 3 Sections W/11 Breakers Consisting of: (7) Breakers - Mfr: General Electric, Size: 1, HP: 3, Volts: 480, CONT: 120, Type: FVNR, Plant: N, (1) Breakers - Mfr: General Electric, Size: 1, HP: 10, Volts: 480, CONT: 120, Type: FVNR, Plant: N, (1) Breakers - Mfr: General Electric, Size: 1, HP: 7, Volts: 480, CONT: 120, Type: FVNR, Plant: N, (2) Breakers - Mfr: General Electric, Size: 1, Did Not Open, Steel Enclosure, Type: Metal Clad, High Voltage, Indoor, Dead Front Horizontal Drawout



SAN-268
Switchboard Panel

Main Gen. Field Breaker, Single Section, Type: Metal Clad, High Voltage, Indoor, Dead Front, Horizontal Drawout, with Door Openings (did not open for breaker information this Unit - HOT)



SAN-269
Panelboard

Panel, Mfr: Cutler-Hammer- Westinghouse Excitation Control, Single Section W/Voltage Regulator, Type: MGR, W/ADJ/Foll Module (2), Protection Module, Limiter Module, Voltage Reg. Logic Module, Steel Enclosure, W/DC Volts Meter, DC Comps Meter, DC Volts Meter, Tattletale warn Indicator Lights, Type: Metal Clad, High Voltage, Indoor Use, Dead front, Horizontal Drawout w/Door Openings



SAN-270
Switchgear

2400 Volt, Mfr: Federal Pacific Electric Company, Type: Metal Clad, High Voltage, Indoor, Dead Front, Horizontal Drawout, Size: Units 1-3-7'-4"L x 7'-6"H x 6'-3 1/4" deep, Breakers - Type: DST 5-250, Continuous Rating: Units 1 & 3: 2400V, 250 MVA, 2000 AMP, Units 4 & 10: 2400V, 250 MVA, 1200 AMP, Momentary Current Rating: 6000 AMP, Control: Mechanically Trip free, Control Switch with Red and Green Indicating lights and ammeter 125V DC Separate Fuses for closing and tripping (1) - Potential Transformers: 2, Type: Drawout P.T., Rating: 2400 / 120 Volt, Primary Fuses: Current Limiting - 2E, Connection: Wye-Wye, Secondary Fuses: 10 AMP, (9) Breakers: Mfr: Federal Pacific Circuit Breaker, Type: DST-5-250, Rated KV: 4.16, BIL KV: 60, PAT Freq.: 60, CLOS Volts: 125 DC, Max. Design KV: 4.76, Rated MVA: 250, Continuous Current Rate: 2,000, Trip Voltage: 125 DC, Wire Diag. No.: 00.0001, Year of Mfr: 1964, W/General Electric Time Overcurrent Relays, Model 121AC66B4A, Type/AC, Long Time, 4/8 Amps, 60 Cycles, 3 each per breaker

Picture Not Available

SAN-271
Switchgear

BUS, Mfr: I-T-E Circuit Breaker Company, Isolated Phase Bus: 14.4 KV, 3 Phase, 60 Cycle, Continuous Rating: 5,000 Amps, Fault Current Rating: 77,000 Amps, Basic Impulse Level: 110 KV, Lightning Arrestors: 15KV, Conductor: Alum., Temperature Rise: 50°C Above 40°C, Bus from Steam Turbine Generator to Main Transformer - Continuous Rating: 5000 Amps, Momentary Rating: 77,000 Amps, Length: 51'-0"/Phase, Conductor Size: 8 1/2" Tubular Alum., construction: Dust-Tight & Weather tight alum. housing, bus top to Unit Auxiliary Transformer, Continuous Rating: 400 Amps, Momentary Rating: 190,000 Amps, Construction: Dust-Tight & Weather tight Alum. housing, length: 4'-0", 1 Phase



SAN-272
Boiler

for Gas Turbine Generator and Steam Turbine generator units